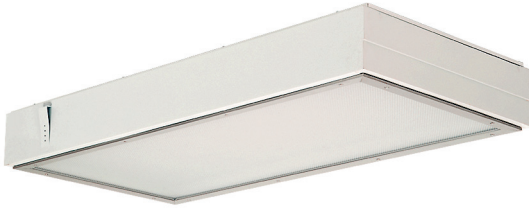


# Grid Techniseal Troffer

## G4 Series

### Grid Mount Rear Access



Food Processing:



#### APPLICATIONS:

- ETL/cETL Listed Wet Location
- Cleanroom  
(Classes 100-100,000; ISO Classes 5-9)
- NSF Certified Food Processing  
(Splash Zone, Food Zone)
- Industrial & Commercial
- Transit

#### FEATURES:

- Rear Access
- L70 ≥ 60,000 hours
- Available in Stainless Steel construction
- Premium Driver with Dimming standard
- Type IC
- Every luminaire tested to assure customer satisfaction
- 5-Year limited warranty

### SPECIFICATIONS

#### HOUSING:

Constructed of nominal 20GA (0.036) zinc coated steel for unmatched corrosion protection. Two welded, tapered, threaded flanges on the top provide a sealed wireway access. All seams are sealed with a long life acrylic sealant.

#### FINISH:

Painted surfaces are two mil white polyester enamel, special colors available.

#### LENS:

0.125 StarFrost Acrylic with 50% DR content for durability, smooth side out. See Ordering Information for other high quality lens options.

#### LENS FRAME:

Exclusively designed, heavy duty, extruded, anodized aluminum with stainless steel captive screws used to hold the lens frame tight to the housing. The frame is hinged for support while servicing.

**Food Zone:** All external metal components of stainless steel (S3 option std).

#### REFLECTOR:

Fabricated of aluminum, painted with a minimum reflectance of 88%.

#### GASKETING:

An extruded, ribbed vinyl gasket seals the lens into the frame; with our exclusive, mechanically held, extruded, silicone gasket used to seal the frame to the housing.

**Food Zone:** Silicone sealant is used to seal the lens into the frame, with extruded EPDM sealing the frame to the housing.

#### ELECTRICAL:

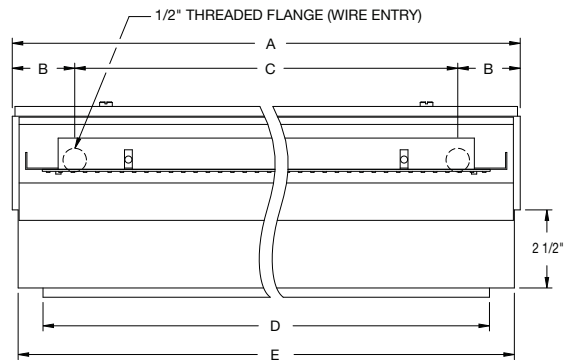
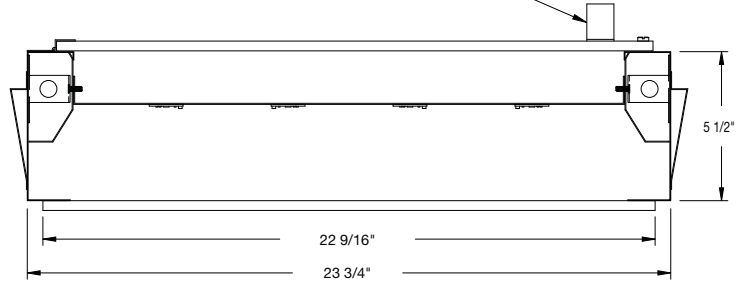
High efficiency LED/Driver combination delivers 160 Lumens/Watt raw array efficacy with 80+ CRI. 4000K color temperature is standard with options for 2700K, 3000K, 3500K, and 5000K. 0-10V dimming comes standard with other control options available. THD <10%@120V, <15%@277V, PF> 0.95.

#### MOUNTING:

Grid or custom detail available.

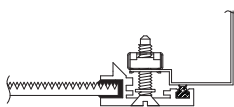
#### REAR ACCESS DESIGN

HANDLE REQUIRES ASSEMBLY TO DOOR

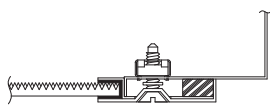


| LENGTH<br>(ft) | WEIGHT<br>(lbs) | DIMENSIONS IN INCHES |         |    |         |          |
|----------------|-----------------|----------------------|---------|----|---------|----------|
|                |                 | A                    | B       | C  | D       | E        |
| 2              | 23              | 23 29/32             | 1 31/32 | 20 | 22 9/16 | 23 17/32 |
| 4              | 38              | 47 29/32             | 1 31/32 | 44 | 46 1/2  | 47 17/32 |

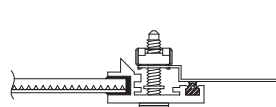
### LENS FRAME DETAILS



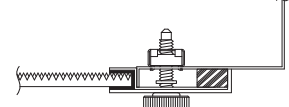
ALUMINUM  
LENS FRAME DETAIL



STAINLESS STEEL  
LENS FRAME DETAIL



SPLASH ZONE  
LENS FRAME DETAIL



FOOD ZONE  
LENS FRAME DETAIL

GM-TD-120224

Due to continuous development and improvements, specifications are subject to change without notice.



# G4 Series – NSF Food Zone Location

## PRODUCT ORDERING CODE

| SERIES                                  | LENGTH                         | MOUNTING   | VOLTAGE             | CCT  | CRI  | LUMENS  | FINISH                             | LENS  | DIMMING   | OPTIONS |
|---|--------------------------------|--|---------------------|--|--|---|------------------------------------|---|---|---------|
| <b>PMFG4</b>                            |                                |  | <b>UNV</b>          |  |  |   | <b>S3</b>                          |   | <b>LD</b>   |         |
| <b>PMFG4</b> NSF Food Zone <sup>2</sup> |                                |  | <b>UNV</b> 120-277V |  | <b>CRI83</b> 83 CRI<br><b>CRI90</b> 90 CRI |   | <b>S3</b> Stainless Steel Complete |   | <b>LD</b> Dimming 0-10V   |         |
|   | <b>2</b> 2 FT<br><b>4</b> 4 FT |  |                     | <b>27K</b> 2700K <sup>4</sup><br><b>3K</b> 3000K<br><b>35K</b> 3500K<br><b>4K</b> 4000K<br><b>5K</b> 5000K |  |   |                                    |   |   |         |
|   |                                | <b>G0</b> 1" (15/16") Standard<br><b>G1</b> 1 1/2" T-Bar<br><b>G2</b> 2" T-Bar |                     |  |  |   |                                    | <b>L4</b> 0.140 50% DR Ext. Prismatic Acrylic (P20)<br><b>L5</b> 0.125 StarFrost® Acrylic (base)<br><b>L9</b> 0.187 Tempered Glass (P62) <sup>5</sup> |   |         |
|   |                                |  |                     |  |  | <b>17L</b> 1700 lm (15W)<br><b>35L</b> 3500 lm (31W)<br><b>53L</b> 5300 lm (46W)<br><b>70L</b> 7000 lm (61W)      |                                    |   | <b>BBU</b> 10W Battery Backup, Integral<br><b>BBU1</b> 12W Battery Backup, Integral<br><b>BBUR2</b> 20W Battery Backup, Remote <sup>6</sup>           |         |
|   |                                |  |                     |  |  | <b>38L</b> 3800 lm (33W)<br><b>76L</b> 7600 lm (66W)<br><b>113L</b> 11300 lm (98W)<br><b>151L</b> 15100 lm (131W) |                                    |   | <b>F1</b> GLR/HLR Fusing (Fast)<br><b>F2</b> GMF/HLR Fusing (Slow)<br><b>T3</b> Tamper Resistant (Hex w/pin or other)<br><b>V1</b> External Gasketing |         |
|   |                                |  |                     |  |  | Selection must match the selected length  |                                    |   |   |         |
|   |                                |  |                     |  |  | Lumens (Typical)  |                                    |   |   |         |

Footnotes:

- <sup>2</sup> NSF Food Zone luminaires (PMF prefix) come in DIRECT CONTACT with food
- <sup>3</sup> Consult Factory
- <sup>4</sup> Only 90 CRI
- <sup>5</sup> Only Available with Stainless Steel Lens Frame
- <sup>6</sup> The 20W Battery Backup Remote powers a minimum of 3 luminaires and must be mounted on the outside of the luminaire or in a remote dry/damp location.

**LUMEN OUTPUT:** All listed lumen values are nominal. Lens transmission and fixture efficiency affect overall lumens.

**INDIVIDUAL UNITS STANDARD**  
**NOT ALL COMBINATIONS POSSIBLE**