

C8 Series

Craft Lite®

Extreme Series | Surface Mount



Food Processing:



Hazardous Location:



APPLICATIONS:

- ETL/cETL Listed Wet Location
- ETL/cETL Hazardous Location (Class I, Division 2; Groups A,B,C & D Class II, Division 2; Groups F & G)
- NSF Certified Food Processing (Splash Zone, Food Zone)
- Industrial & Commercial
- Transit

FEATURES:

- Tested to LM79, LM80
- L70 is >60,000 hours
- Square version available
- Available in Stainless Steel construction
- Premium Driver with Dimming standard
- Every luminaire tested to assure customer satisfaction
- 5-Year limited warranty

SPECIFICATIONS

HOUSING:

Constructed of 20GA (0.036 inch) zinc coated steel for unmatched corrosion protection. Featuring a double channel, one welded inside the other, with space between the channel sides to capture the diffuser. Threaded hubs are continuously welded into the channel ends providing a sealed wireway access. Removable plugs seal the hubs when not utilized.

Food Zone: All external metal components of stainless steel (S4 Finish Standard).

OPTIONAL PREMIUM MATERIALS:

S4 - All metal components of 304 stainless steel.

FINISH:

Painted surfaces are two mil of white polyester enamel, custom colors available.

LENS:

0.125 inch StarFrost® Acrylic with 50% DR content for durability, smooth side out. See ordering information for other high quality acrylic and polycarbonate lens options. A two piece lens with center joiner band is available.

END CAPS:

Die formed of 18GA (0.048 inch) stainless steel. A threaded, knurled ring secures the end cap to the luminaire housing. End caps secure lens.

GASKETING:

EPDM is used in the housing channels and end caps.

ELECTRICAL:

High efficiency LED/Driver combination delivers 160 Lumens/Watt raw array efficacy with 80+ CRI. 4000K color temperature is standard with options for 2700K, 3000K, 3500K, and 5000K. 0-10V dimming comes standard with other control options available. THD <10% @ 120V, <15% @ 277V, PF> 0.95.

MOUNTING:

Surface, chain, or pendant options available for covered ceiling installations. Continuous row luminaires manufactured with aligning pins and utilize joiner bands. For further information, contact Sales Representative.

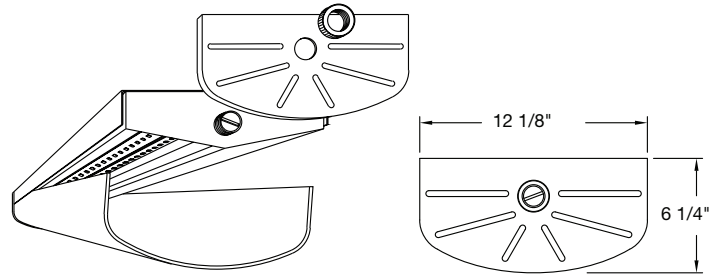
Splash and Food Zone: Surface or continuous row for covered ceiling installations only.

TEMPERATURE CODE:

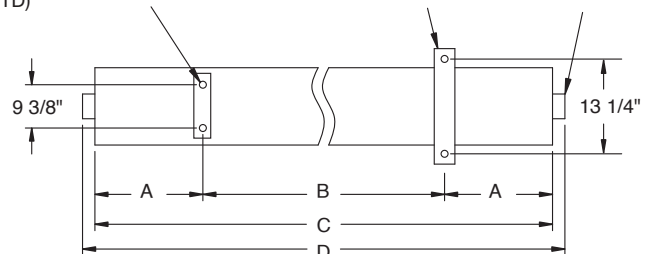
Class I, Div. 2 = T4A (120 °C); Class II, Div. 2 = T6 (85 °C)

(No luminaire surface exposed to the hazardous atmosphere will exceed this temperature. Based on 40 °C (104 °F) ambient.)

Temperature Range: -20 to 35 °C (-4 to 95 °F)



1/8" x 1" BAR WELDED TO HOUSING W/ 9/32" DIA. MTG. HOLES
 OPTIONAL MTG STRAP W/ 5/16" DIA. MTG. HOLES
 3/4" THREADED HUB W/ PLUG (STD)

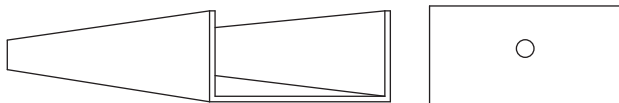


1/2" THREADED FLANGE (OPTIONAL, WET LOC.)

LENGTH (ft)	WEIGHT (lbs)	DIMENSIONS IN INCHES			
		A	B	C	D
1	9	2 3/32	10	14 3/16	15 5/16
2	17	4 19/32	16	25 3/16	26 5/16
3	22	10 1/8	16	36 1/4	37 3/8
4	27	7 5/8	32	47 1/4	48 3/8
5	34	13 1/8	32	58 1/4	59 3/8
6	38	10 5/8	48	69 1/4	70 3/8
7	44	8 5/32	64	80 5/16	81 7/16
8	50	13 21/32	64	91 5/16	92 7/16

FEATURES | OPTIONS

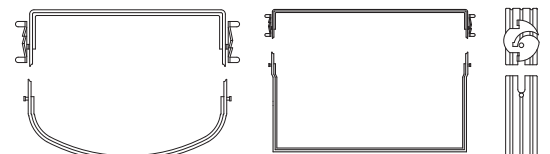
SQUARE POLYCARBONATE LENS AND END CAP



SQUARE LENS MODELS AVAILABLE

- L9W = White Square Polycarbonate
- L9P = Prismatic Square Polycarbonate

C8 JOINER BAND



GM-TD-091824

Due to continuous development and improvements, specifications are subject to change without notice.

C8 Series – Wet & NSF Splash Zone Locations

PRODUCT ORDERING CODE

SERIES	LENGTH	MOUNTING	VOLTAGE	CCT	CRI	LUMENS	FINISH	LENS	DIMMING	OPTIONS
PMC8 Wet Location			UNV 120 - 277 VAC		CRI83 83 CRI CRI90 90 CRI				LD Dimming 0-10V	
PMSC8 NSF Splash Zone ¹										
	1 1 FT			27K 2700K ⁴			PZ White Painted Zinc Steel			
	2 2 FT			3K 3000K			S4 Stainless Steel ³			
	3 3 FT			35K 3500K				L3 0.125 White Acrylic (Cell Cast)		
	4 4 FT			4K 4000K				LH3 0.150 Extra Heavy White Acrylic		
	5 5 FT			5K 5000K				L4 0.140 50% DR Ext. Prismatic Acrylic (P20)		
	6 6 FT	MS1 Marine Straps Zinc						L5 0.125 StarFrost® Acrylic (base)		
	7 7 FT	MS2 Marine Straps Stainless						L7⁵ 0.125 White Polycarbonate		
	8 8 FT	CM Cable* Mount						L8 0.156 Prismatic Polycarbonate (P12)		
		PM Pendant** Mount						L9W White Square Polycarbonate		
		SF Surface Mount ³						L9P Prismatic Square Polycarbonate		
		Surface Mount with								
		SC Bracket (for chain* mount or standoff)								
		*Requires third-party hardware								
		**Requires third-party mounting stem and hardware								
	1 FT					23L 2300 lm (19W) 47L 4700 lm (37W)				BBU 10W Battery Backup, Integral ¹¹ BBU1 12W Battery Backup, Integral ¹¹
	2 FT					47L 4700 lm (37W) 93L 9300 lm (72W)				BBUR2 20W Battery Backup, Remote ⁶
	3 FT					70L 7000 lm (53W) 140L 14000 lm (107W)				F1 GLR/HLR Fusing (Fast) F2 GMF/HLR Fusing (Slow)
	4 FT					93L 9300 lm (72W) 186L 18600 lm (139W)				M3C In-Row Center ⁷ M3E In-Row End ⁷
	5 FT					116L 11600 lm (88W) 232L 23200 lm (176W)				J8 Wire Guard ⁸ P11 Guardcraft® Antimicrobial Coating ⁹
	6 FT					139L 13900 lm (107W) 279L 27900 lm (213W)				T3 Tamper Resistant (Hex w/pin or other) ³ T6 Screw-on End Caps (Requires W5)
	7 FT					163L 16300 lm (125W) 325L 32500 lm (250W)				T7 Hub Cap (Replaces Ring & Plug) W5 Rear Wire Entry ⁵
	8 FT					186L 18600 lm (139W) 372L 37200 lm (285W)				
						Selection must match the selected length				
						Lumens (Nominal)				

Footnotes:

- ¹ NSF Splash Zone luminaires (PMS prefix) may become soiled, but are outside the danger of recontamination
- ³ Required for 3G rating
- ⁴ Only 90 CRI
- ⁵ Consult Factory
- ⁶ The 20W Battery Backup Remote powers a minimum of 3 luminaires and must be mounted on the outside of the luminaire or in a remote dry/damp location
- ⁷ Refer to In-Row Construction drawing below to determine necessary center & end units. Every In-Row luminaire must include two ends (M3E), one or more centers (M3C) and joiner bands (drawing details pg. 1)
- ⁸ Is not available for NSF Splash and Food Zones
- ⁹ Only available with White Painted Zinc Steel Finish
- ¹¹ Not available on 1 FT lengths

C8 Series – NSF Food Zone Location

PRODUCT ORDERING CODE

SERIES	LENGTH	MOUNTING	VOLTAGE	CCT	CRI	LUMENS	FINISH	LENS	DIMMING	OPTIONS
PMFC8		SF	UNV				S4		LD	
PMFC8 NSF Food Zone ²			UNV 120 - 277 VAC		CRI83 83 CRI CRI90 90 CRI		S4 Stainless Steel ³		LD Dimming 0-10V	
	1 1 FT 2 2 FT 3 3 FT 4 4 FT 5 5 FT 6 6 FT 7 7 FT 8 8 FT			27K 2700K ⁴ 3K 3000K 35K 3500K 4K 4000K 5K 5000K				L4 0.140 50% DR Extruded Prismatic Acrylic (P20) L5 0.125 StarFrost® Acrylic (base)		
		SF Surface Mount ³								
						1 FT 2 FT 3 FT 4 FT 5 FT 6 FT 7 FT 8 FT				BBU 10W Battery Backup, Integral ¹¹ BBU1 12W Battery Backup, Integral ¹¹ BBUR2 20W Battery Backup, Remote ⁶ F1 GLR/HLR Fusing (Fast) F2 GMF/HLR Fusing (Slow) T7 Hub Cap (Replaces Ring & Plug) W5 Rear Wire Entry ⁵
						23L 2300 lm (19W) 47L 4700 lm (37W) 47L 4700 lm (37W) 93L 9300 lm (72W) 70L 7000 lm (53W) 140L 14000 lm (107W) 93L 9300 lm (72W) 186L 18600 lm (139W) 116L 11600 lm (88W) 232L 23200 lm (176W) 139L 13900 lm (107W) 279L 27900 lm (213W) 163L 16300 lm (125W) 325L 32500 lm (250W) 186L 18600 lm (139W) 372L 37200 lm (285W)				
						Selection must match the selected length	Lumens (Nominal)			

Footnotes:

- ² NSF Food Zone luminaires (PMF prefix) come in DIRECT CONTACT with food
- ³ Required for 3G rating
- ⁴ Only 90 CRI
- ⁵ Consult Factory
- ⁶ The 20W Battery Backup Remote powers a minimum of 3 luminaires and must be mounted on the outside of the luminaire or in a remote dry/damp location
- ¹¹ Not available on 1 FT lengths

C8 Series – Hazardous Location

PRODUCT ORDERING CODE

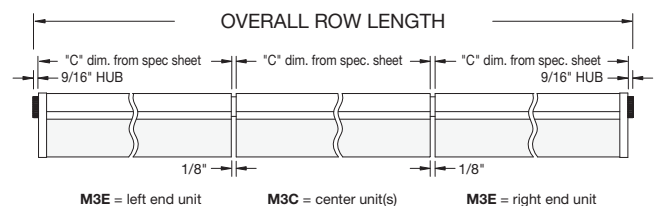
SERIES	LENGTH	MOUNTING	VOLTAGE	CCT	CRI	LUMENS	FINISH	LENS	DIMMING	OPTIONS
PMHC8			UNV						LD	
PMHC8 Hazardous			UNV 120 - 277 VAC		CRI83 83 CRI CRI90 90 CRI		PZ White Painted Zinc Steel S4 Stainless Steel ³		LD Dimming 0-10V	
	1 1 FT 2 2 FT 3 3 FT 4 4 FT 5 5 FT 6 6 FT 7 7 FT 8 8 FT	SF Surface Mount ³ Surface Mount with SC Bracket (for chain* mount or standoff) PM Pendant** Mount *Requires third-party hardware **Requires third-party mounting stem and hardware and S4 Option		27K 2700K ⁴ 3K 3000K 35K 3500K 4K 4000K 5K 5000K		1 FT 23L 2300 lm (19W) 47L 4700 lm (37W) 2 FT 47L 4700 lm (37W) 93L 9300 lm (72W) 3 FT 70L 7000 lm (53W) 140L 14000 lm (107W) 4 FT 93L 9300 lm (72W) 186L 18600 lm (139W) 5 FT 116L 11600 lm (88W) 232L 23200 lm (176W) 6 FT 139L 13900 lm (107W) 279L 27900 lm (213W) 7 FT 163L 16300 lm (125W) 325L 32500 lm (250W) 8 FT 186L 18600 lm (139W) 372L 37200 lm (285W)	L3 0.125 White Acrylic (Cell Cast) LH3 0.150 Extra Heavy White Acrylic L4 0.140 50% DR Ext. Prismatic Acrylic (P20) L5 .0125 StarFrost® Acrylic (base) L7 0.125 White Polycarbonate L8 0.156 Prismatic Polycarbonate (P12) L9W White Square Polycarbonate L9P Prismatic Square Polycarbonate	F1 GLR/HLR Fusing (Fast) F2 GMF/HLR Fusing (Slow) M3C In-Row Center ⁷ M3E In-Row End ⁷ J8 Wire Guard ⁸ P11 Guardcraft® Antimicrobial Coating ⁹ T3 Tamper Resistant (Hex w/pin or other) ³ T6 Screw-on End Caps (Requires W5) T7 Hub Cap (Replaces Ring & Plug) W5 Rear Wire Entry*** ⁵		

Selection must match the selected length Lumens (Nominal)

Footnotes:
³ Required for 3G rating
⁴ Only 90 CRI
⁵ Consult Factory
⁷ Refer to In-Row Construction drawing below to determine necessary center & end units. Every In-Row luminaire must include two ends (M3E), one or more centers (M3C) and joiner bands (drawing details pg. 1)
⁸ Is not available for NSF Splash and Food Zones
⁹ Only Available with White Painted Zinc Steel Finish

*** Requires S4 Option
 (Battery Backup NOT Available for Hazardous Location)

IN-ROW CONSTRUCTION



LUMEN OUTPUT: All listed lumen values are nominal. Lens transmission and fixture efficiency affect overall lumens.

INDIVIDUAL UNITS STANDARD
NOT ALL COMBINATIONS POSSIBLE