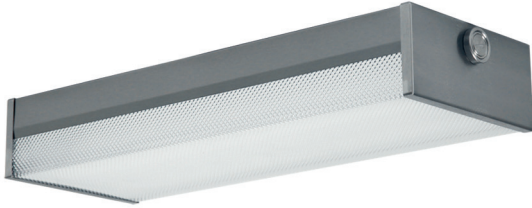


# C6 Series

**Craft Lite®**

**Extreme Series | Surface Mount**



Food Processing:



Hazardous Location:



**APPLICATIONS:**

- ETL/cETL Listed Wet Location
- ETL/cETL Hazardous Location (Class I, Division 2; Groups A,B,C & D Class II, Division 2; Groups F & G)
- NSF Certified Food Processing (Splash Zone, Food Zone)
- Industrial & Commercial
- Transit

**FEATURES:**

- Tested to LM79, LM80
- L70 is >60,000 hours
- Square version available
- Available in Stainless Steel construction
- Premium Driver with Dimming standard
- Every luminaire tested to assure customer satisfaction
- 5-Year limited warranty

**SPECIFICATIONS**

**HOUSING:**

Constructed of 20GA (0.036 inch) zinc coated steel for unmatched corrosion protection. Featuring a double channel, one welded inside the other, with space between the channel sides to capture the diffuser. Threaded hubs are continuously welded into the channel ends providing a sealed wireway access. Removable plugs seal the hubs when not utilized.

**Food Zone:** All external metal components of stainless steel (S4 Finish Standard).

**OPTIONAL PREMIUM MATERIALS:**

S4 - All metal components of 304 stainless steel.

**FINISH:**

Painted surfaces are two mil white polyester enamel, custom colors available.

**LENS:**

0.125 inch StarFrost® Acrylic with 50% DR content for durability, smooth side out. See ordering information for other high quality acrylic and polycarbonate lens options. A two piece lens with center joiner band is available.

**END CAPS:**

Die formed of 18GA (0.036 inch) stainless steel. A threaded, knurled ring secures the end cap to the luminaire housing. End caps secure lens.

**GASKETING:**

EPDM is used in the housing channels and end caps.

**ELECTRICAL:**

High efficiency LED/Driver combination delivers 160 Lumens/Watt raw array efficacy with 80+ CRI. 4000K color temperature is standard with options for 2700K, 3000K, 3500K, and 5000K. 0-10V dimming comes standard with other control options available. THD <10% @ 120V, <15% @ 277V, PF> 0.95.

**MOUNTING:**

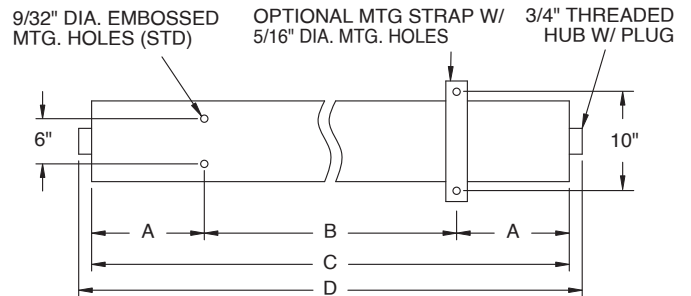
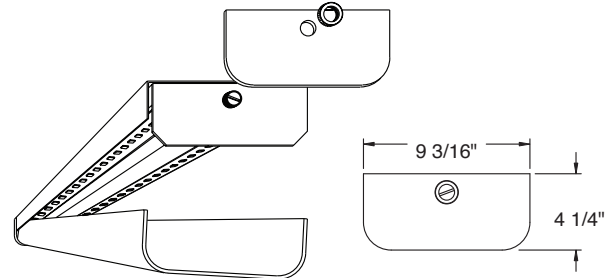
Surface, chain, or pendant options available for covered ceiling installations. Continuous row luminaires manufactured with aligning pins and utilize joiner bands. For further information, contact Sales Representative.

**Splash and Food Zone:** Surface for covered ceiling installations only.

**TEMPERATURE CODE:**

Class I, Div. 2 = T4A (120 °C); Class II, Div. 2 = T6 (85 °C)

(No luminaire surface exposed to the hazardous atmosphere will exceed this temperature. Based on 40 °C (104 °F) ambient.)

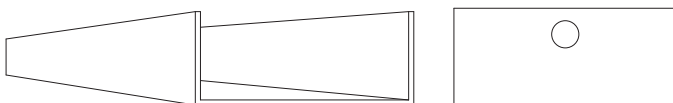


1/2" THREADED FLANGE (OPTIONAL, WET LOC.)

LENGTH (ft)	WEIGHT (lbs)	DIMENSIONS IN INCHES			
		A	B	C	D
1	9	2 3/32	10	14 3/16	15 5/16
2	17	4 19/32	16	25 3/16	26 5/16
3	22	10 1/8	16	36 1/4	37 3/8
4	27	7 5/8	32	47 1/4	48 3/8
5	34	13 1/8	32	58 1/4	59 3/8
6	38	10 5/8	48	69 1/4	70 3/8
7	44	8 5/32	64	80 5/16	81 7/16
8	50	13 21/32	64	91 5/16	92 7/16

**FEATURES | OPTIONS**

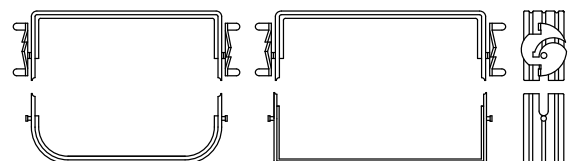
**SQUARE POLYCARBONATE LENS AND END CAP**



**SQUARE LENS MODELS AVAILABLE**

L9W = White Square Polycarbonate  
L9P = Prismatic Square Polycarbonate

**C6 JOINER BANDS**



GM-TD-091624

Due to continuous development and improvements, specifications are subject to change without notice.

# C6 Series – Wet & NSF Splash Zone Locations

## PRODUCT ORDERING CODE

SERIES	LENGTH	MOUNTING	VOLTAGE	CCT	CRI	LUMENS	FINISH	LENS	DIMMING	OPTIONS
<b>PM</b> C6 Wet Location			<b>UNV</b> 120 - 277 VAC		<b>CRI</b> 83 83 CRI				<b>LD</b> Dimming 0-10V	
<b>PM</b> SC6 NSF Splash Zone <sup>1</sup>					<b>CRI</b> 90 90 CRI					
	<b>1</b> 1 FT			<b>27K</b> 2700K <sup>4</sup>			<b>PZ</b> White Painted Zinc Steel			
	<b>2</b> 2 FT			<b>3K</b> 3000K			<b>S4</b> Stainless Steel <sup>3</sup>			
	<b>3</b> 3 FT			<b>35K</b> 3500K						
	<b>4</b> 4 FT			<b>4K</b> 4000K						
	<b>5</b> 5 FT			<b>5K</b> 5000K						
	<b>6</b> 6 FT									
	<b>7</b> 7 FT									
	<b>8</b> 8 FT									
		<b>MS1</b> Marine Straps Zinc						<b>L3</b> 0.125 White Acrylic (Cell Cast)		
		<b>MS2</b> Marine Straps Stainless						<b>LH3</b> 0.150 Extra Heavy White Acrylic		
		<b>CM</b> Cable* Mount						<b>L4</b> 0.140 50% DR Ext. Prismatic Acrylic (P20)		
		<b>PM</b> Pendant** Mount						<b>L5</b> 0.125 StarFrost® Acrylic (base)		
		<b>SF</b> Surface Mount <sup>3</sup>						<b>L7</b> 0.125 White Polycarbonate		
		Surface Mount with						<b>L8</b> 0.156 Prismatic Polycarbonate (P12)		
		<b>SC</b> Bracket (for chain* mount or standoff)						<b>L9W</b> White Square Polycarbonate		
		*Requires third-party hardware						<b>L9P</b> Prismatic Square Polycarbonate		
		**Requires third-party mounting stem and hardware and S4 Option								
										<b>1 FT</b> <b>23L</b> 2300 lm (19W)
										<b>2 FT</b> <b>47L</b> 4700 lm (37W)
										<b>3 FT</b> <b>70L</b> 7000 lm (53W)
										<b>4 FT</b> <b>93L</b> 9300 lm (72W)
										<b>5 FT</b> <b>116L</b> 11600 lm (88W)
										<b>6 FT</b> <b>140L</b> 14000 lm (107W)
										<b>7 FT</b> <b>163L</b> 16300 lm (125W)
										<b>8 FT</b> <b>190L</b> 19000 lm (144W)
						Selection must match the selected length	Lumens (Nominal)			<b>BBU</b> 10W Battery Backup, Integral <sup>11</sup>
										<b>BBU1</b> 12W Battery Backup, Integral <sup>11</sup>
										<b>BBUR2</b> 20W Battery Backup, Remote <sup>6</sup>
										<b>F1</b> GLR/HLR Fusing (Fast)
										<b>F2</b> GMF/HLR Fusing (Slow)
										<b>M3C</b> In-Row Center <sup>7</sup>
										<b>M3E</b> In-Row End <sup>7</sup>
										<b>J8</b> Wire Guard <sup>8</sup>
										<b>P11</b> Guardcraft® Antimicrobial Coating <sup>9</sup>
										<b>T3</b> Tamper Resistant (Hex w/pin or other) <sup>3</sup>
										<b>T6</b> Screw-on End Caps (Requires W5)
										<b>T7</b> Hub Cap (Replaces Ring & Plug)
										<b>W5</b> Rear Wire Entry <sup>5</sup>

Footnotes:

- <sup>1</sup> NSF Splash Zone luminaires (PMS prefix) may become soiled, but are outside the danger of recontamination
- <sup>3</sup> Required for 3G rating
- <sup>4</sup> Only 90 CRI
- <sup>5</sup> Consult Factory
- <sup>6</sup> The 20W Battery Backup Remote powers a minimum of 3 luminaires and must be mounted on the outside of the luminaire or in a remote dry/damp location
- <sup>7</sup> Refer to In-Row Construction drawing below to determine necessary center & end units. Every In-Row luminaire must include two ends (M3E), one or more centers (M3C) and joiner bands (drawing details pg. 1)
- <sup>8</sup> Is not available for NSF Splash and Food Zones
- <sup>9</sup> Only available with White Painted Zinc Steel Finish
- <sup>11</sup> Not available on 1 FT lengths

# C6 Series – NSF Food Zone Location

## PRODUCT ORDERING CODE

SERIES	LENGTH	MOUNTING	VOLTAGE	CCT	CRI	LUMENS	FINISH	LENS	DIMMING	OPTIONS
<b>PMFC6</b>		<b>SF</b>	<b>UNV</b>				<b>S4</b>		<b>LD</b>	
<b>PMFC6</b> NSF Food Zone <sup>2</sup>			<b>UNV</b> 120 - 277 VAC		<b>CRI83</b> 83 CRI <b>CRI90</b> 90 CRI		<b>S4</b> Stainless Steel <sup>3</sup>		<b>LD</b> Dimming 0-10V	
	<b>1</b> 1 FT <b>2</b> 2 FT <b>3</b> 3 FT <b>4</b> 4 FT <b>5</b> 5 FT <b>6</b> 6 FT <b>7</b> 7 FT <b>8</b> 8 FT			<b>27K</b> 2700K <sup>4</sup> <b>3K</b> 3000K <b>35K</b> 3500K <b>4K</b> 4000K <b>5K</b> 5000K				<b>L4</b> 0.140 50% DR Extruded Prismatic Acrylic (P20) <b>L5</b> 0.125 StarFrost® Acrylic (base)		
		<b>SF</b> Surface Mount <sup>3</sup>								
						<b>1 FT</b> <b>23L</b> 2300 lm (19W) <b>2 FT</b> <b>47L</b> 4700 lm (37W) <b>3 FT</b> <b>70L</b> 7000 lm (53W) <b>4 FT</b> <b>93L</b> 9300 lm (72W) <b>5 FT</b> <b>116L</b> 11600 lm (88W) <b>6 FT</b> <b>140L</b> 14000 lm (107W) <b>7 FT</b> <b>163L</b> 16300 lm (125W) <b>8 FT</b> <b>190L</b> 19000 lm (144W)			<b>BBU</b> 10W Battery Backup, Integral <sup>11</sup> <b>BBU1</b> 12W Battery Backup, Integral <sup>11</sup> <b>BBUR2</b> 20W Battery Backup, Remote <sup>6</sup> <b>F1</b> GLR/HLR Fusing (Fast) <b>F2</b> GMF/HLR Fusing (Slow) <b>T7</b> Hub Cap (Replaces Ring & Plug) <b>W5</b> Rear Wire Entry <sup>5</sup>	
						Selection must match the selected length	Lumens (Nominal)			

Footnotes:

- <sup>2</sup> NSF Food Zone luminaires (PMF prefix) come in DIRECT CONTACT with food
- <sup>3</sup> Required for 3G rating
- <sup>4</sup> Only 90 CRI
- <sup>5</sup> Consult Factory
- <sup>6</sup> The 20W Battery Backup Remote powers a minimum of 3 luminaires and must be mounted on the outside of the luminaire or in a remote dry/damp location
- <sup>11</sup> Not available on 1 FT lengths

# C6 Series – Hazardous Location

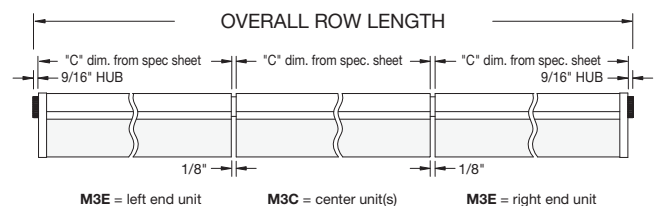
## PRODUCT ORDERING CODE

SERIES	LENGTH	MOUNTING	VOLTAGE	CCT	CRI	LUMENS	FINISH	LENS	DIMMING	OPTIONS
<b>PMHC6</b>			<b>UNV</b>						<b>LD</b>	
<b>PMHC6</b> Hazardous			<b>UNV</b> 120 - 277 VAC		<b>CRI83</b> 83 CRI <b>CRI90</b> 90 CRI		<b>PZ</b> White Painted Zinc Steel <b>S4</b> Stainless Steel <sup>3</sup>		<b>LD</b> Dimming 0-10V	
	<b>1</b> 1 FT <b>2</b> 2 FT <b>3</b> 3 FT <b>4</b> 4 FT <b>5</b> 5 FT <b>6</b> 6 FT <b>7</b> 7 FT <b>8</b> 8 FT	<b>SF</b> Surface Mount <sup>3</sup> Surface Mount with <b>SC</b> Bracket (for chain* mount or standoff) <b>PM</b> Pendant** Mount  *Requires third-party hardware **Requires third-party mounting stem and hardware and S4 Option		<b>27K</b> 2700K <sup>4</sup> <b>3K</b> 3000K <b>35K</b> 3500K <b>4K</b> 4000K <b>5K</b> 5000K				<b>L3</b> 0.125 White Acrylic (Cell Cast) <b>LH3</b> 0.150 Extra Heavy White Acrylic <b>L4</b> 0.140 50% DR Ext. Prismatic Acrylic (P20) <b>L5</b> 0.125 StarFrost® Acrylic (base) <b>L7</b> 0.125 White Polycarbonate <b>L8</b> 0.156 Prismatic Polycarbonate (P12) <b>L9W</b> White Square Polycarbonate <b>L9P</b> Prismatic Square Polycarbonate		
						<b>1 FT</b> <b>23L</b> 2300 lm (19W) <b>2 FT</b> <b>47L</b> 4700 lm (37W) <b>3 FT</b> <b>70L</b> 7000 lm (53W) <b>4 FT</b> <b>93L</b> 9300 lm (72W) <b>5 FT</b> <b>116L</b> 11600 lm (88W) <b>6 FT</b> <b>140L</b> 14000 lm (107W) <b>7 FT</b> <b>163L</b> 16300 lm (125W) <b>8 FT</b> <b>190L</b> 19000 lm (144W)				<b>F1</b> GLR/HLR Fusing (Fast) <b>F2</b> GMF/HLR Fusing (Slow) <b>M3C</b> In-Row Center <sup>7</sup> <b>M3E</b> In-Row End <sup>7</sup> <b>J8</b> Wire Guard <sup>8</sup> <b>P11</b> Guardcraft® Antimicrobial Coating <sup>9</sup> <b>T3</b> Tamper Resistant (Hex w/pin or other) <sup>3</sup> <b>T6</b> Screw-on End Caps (Requires W5) <b>T7</b> Hub Cap (Replaces Ring & Plug) <b>W5</b> Rear Wire Entry*** <sup>5</sup>
						Selection must match the selected length	Lumens (Nominal)			***Requires S4 Option <b>(Battery Backup NOT Available for Hazardous Location)</b>

**Footnotes:**

- <sup>3</sup> Required for 3G rating
- <sup>4</sup> Only 90 CRI
- <sup>5</sup> Consult Factory
- <sup>7</sup> Refer to In-Row Construction drawing below to determine necessary center & end units. Every In-Row luminaire must include two ends (M3E), one or more centers (M3C) and joiner bands (drawing details pg. 1)
- <sup>8</sup> Is not available for NSF Splash and Food Zones
- <sup>9</sup> Only Available with White Painted Zinc Steel Finish

### IN-ROW CONSTRUCTION



**LUMEN OUTPUT:** All listed lumen values are nominal. Lens transmission and fixture efficiency affect overall lumens.

**INDIVIDUAL UNITS STANDARD**  
**NOT ALL COMBINATIONS POSSIBLE**