

## C0 Series

**Craft Lite®**

### Extreme Series | Surface Mount



Food  
Processing:



Made in USA with domestic & globally sourced components

#### APPLICATIONS:

- ETL/cETL Listed Wet Location
- NSF Certified Food Processing (Splash Zone, Food Zone)
- Industrial & Commercial
- Transit

#### FEATURES:

- Luminaires adaptable to your needs
- Available in Stainless Steel construction
- Premium Driver with Dimming standard
- Every luminaire tested to assure customer satisfaction
- 3G Vibration Test rating
- 5-Year limited warranty

### SPECIFICATIONS

#### HOUSING:

Constructed of 20GA (0.036 inch) zinc coated steel for unmatched corrosion protection. Featuring a double channel, one welded inside the other, with space between the channel sides to capture the diffuser. Threaded hubs are continuously welded into the channel ends providing a sealed wireway access. Removable plugs seal the hubs when not utilized.

**Food Zone:** All external metal components of stainless steel (S4 Finish Standard).

#### OPTIONAL PREMIUM MATERIALS:

S4 - All metal components of 304 stainless steel.

#### END CAPS:

Die formed of 18GA (0.048 inch) stainless steel. A threaded, knurled ring secures the end cap to the luminaire housing. End caps secure lens.

#### GASKETING:

EPDM is used in the housing channels and neoprene end caps.

#### FINISH:

Painted surfaces are two mil of white polyester enamel, custom colors available.

#### LENS:

0.125 inch StarFrost® Acrylic with 50% DR content for durability, smooth side out. See ordering information for other high quality acrylic and polycarbonate lens options. A two piece lens with center joiner band is available.

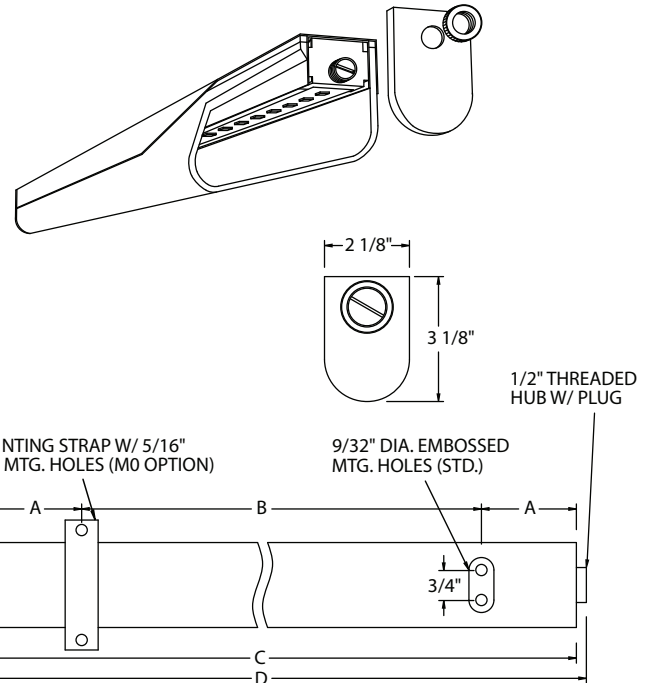
#### ELECTRICAL:

High efficiency LED/Driver combination delivers 160 Lumens/Watt raw array efficacy with 80+ CRI. 4000K color temperature is standard with options for 2700K, 3000K, 3500K, and 5000K. 0-10V dimming comes standard with other control options available. THD <10% @ 120V, <15% @ 277V, PF> 0.95.

#### MOUNTING:

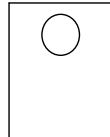
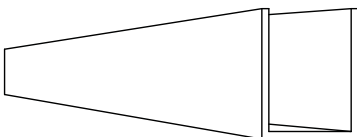
Surface, chain, or pendant options available for covered ceiling installations. Continuous row luminaires manufactured with aligning pins and utilize joiner bands. For further information, contact Sales Representative.

**Splash and Food Zone:** Surface or continuous row for covered ceiling installations only.



LENGTH (ft)	WEIGHT (lbs)	DIMENSIONS IN INCHES			
		A	B	C	D
2	8	3 19/32	18	25 3/16	26 5/16
3	10	2 3/16	32	36 1/4	37 3/8
4	12	7 5/8	32	47 1/4	48 3/8

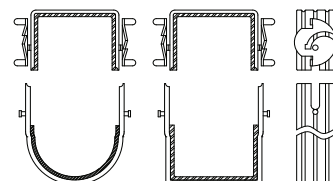
### FEATURES | OPTIONS



#### SQUARE LENS MODELS AVAILABLE

L9W = White Square Polycarbonate  
L9P = Prismatic Square Polycarbonate

#### C0 JOINER BANDS



JC-TD-010824

# C0 Series — Wet & NSF Splash Zone Locations

## PRODUCT ORDERING CODE

SERIES	LENGTH	MOUNTING	VOLTAGE	CCT	CRI	LUMENS	FINISH	LENS	DIMMING	OPTIONS
			UNV						LD	
<b>PMCO</b> Wet Location <b>PMSCO</b> NSF Splash Zone <sup>1</sup>	<b>2</b> 2 FT <b>3</b> 3 FT <b>4</b> 4 FT	<b>MS1</b> Marine Straps Zinc <b>MS2</b> Marine Straps Stainless <b>CM</b> Cable* Mount <b>PM</b> Pendant** Mount <b>SF</b> Surface Mount <sup>13</sup> <b>SC</b> Surface Mount with Bracket (for chain* mount or standoff)	<b>UNV</b> 120 - 277 VAC	<b>27K</b> 2700K <b>3K</b> 3000K <b>35K</b> 3500K <b>4K</b> 4000K <b>5K</b> 5000K	<b>CRI83</b> 83 CRI <b>CRI90</b> 90 CRI		<b>PZ</b> White Painted Zinc Steel <b>S4</b> Stainless Steel <sup>13</sup> <b>CC</b> Custom Color <b>S1</b> Special Material <sup>4</sup>	<b>L3</b> 0.125 White Acrylic (Cell Cast) <b>L4</b> 0.140 50% DR Ext. Prismatic Acrylic (P20) <b>L5</b> 0.125 StarFrost® Acrylic (base) <b>L7</b> 0.125 White Polycarbonate <b>L8</b> 0.156 Prismatic Polycarbonate (P12) <b>L9W</b> White Square Polycarbonate <b>L9P</b> Prismatic Square Polycarbonate	<b>LD</b> Dimming 0-10V	<b>F1</b> GLR/HLR Fusing (Fast) <b>F2</b> GMF/HLR Fusing (Slow) <b>M3C</b> In-Row Center <sup>7</sup> <b>M3E</b> In-Row End <sup>7</sup> <b>J8</b> Wire Guard <sup>5</sup> <b>P11</b> Guardcraft® Antimicrobial Coating <sup>3</sup> <b>T3</b> Tamper Resistant (Hex w/pin or other) <sup>13</sup> <b>T6</b> Screw-on End Caps (Requires W5) <b>T7</b> Hub Cap (Replaces Ring & Plug) <b>W5</b> Rear Wire Entry <sup>4</sup>
		*Requires third-party hardware **Requires third-party mounting stem and hardware				<b>2 FT</b> <b>19L</b> 1881 lm (14W) <b>3 FT</b> <b>28L</b> 2822 lm (21W) <b>4 FT</b> <b>38L</b> 3762 lm (28W)				
						Selection must match the selected length				

Footnotes:

- <sup>1</sup> NSF Splash Zone luminaires (PMS prefix) may become soiled, but are outside the danger of recontamination
- <sup>3</sup> Only Available with White Painted Zinc Steel Finish
- <sup>4</sup> Consult Factory
- <sup>5</sup> Is not available for NSF Splash and Food Zones
- <sup>7</sup> Refer to In-Row Construction drawing below to determine necessary center & end units. Every In-Row luminaire must include two ends (M3E), one or more centers (M3C) and joiner bands (drawing details pg. 1)
- <sup>13</sup> Required for 3G rating

## C0 Series – NSF Food Zone Location

### PRODUCT ORDERING CODE

SERIES	LENGTH	MOUNTING	VOLTAGE	CCT	CRI	LUMENS	FINISH	LENS	DIMMING	OPTIONS
PMFC0		SF	UNV						LD	
PMFC0 NSF Food Zone <sup>2</sup>			UNV 120 - 277 VAC		CRI83 83 CRI CRI90 90 CRI				LD Dimming 0-10V	
	2 2 FT 3 3 FT 4 4 FT			27K 2700K 3K 3000K 35K 3500K 4K 4000K 5K 5000K			S4 Stainless Steel			
		SF Surface Mount <sup>13</sup>						L4 0.140 50% DR Ext. Prismatic Acrylic (P20) L5 0.125 StarFrost® Acrylic (base)		
						2 FT 19L 1881 lm (14W) 3 FT 28L 2822 lm (21W) 4 FT 38L 3762 lm (28W)				F1 GLR/HLR Fusing (Fast) F2 GMF/HLR Fusing (Slow) T7 Hub Cap (Replaces Ring & Plug) W5 Rear Wire Entry <sup>4</sup>
						Selection must match the selected length				

Footnotes:

<sup>2</sup> NSF Food Zone luminaires (PMF prefix) come in DIRECT CONTACT with food

<sup>4</sup> Consult Factory

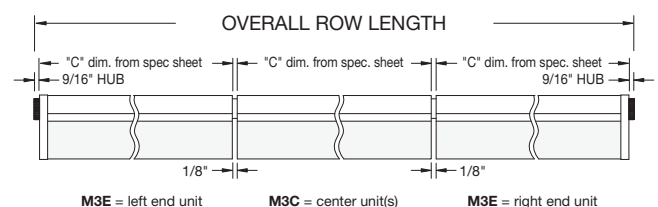
<sup>13</sup> Required for 3G rating

**LUMEN OUTPUT:** All listed lumen values are nominal. Lens transmission and fixture efficiency affect overall lumens.

**INDIVIDUAL UNITS STANDARD**

**NOT ALL COMBINATIONS POSSIBLE**

### IN-ROW CONSTRUCTION



JC-TD-010824

Due to continuous development and improvements, specifications are subject to change without notice.