

G0 Series

Grid Mount



Made in USA with domestic & globally sourced components

APPLICATIONS:

- ETL/cETL Listed Wet Location
- Cleanroom
(Classes 100-100,000; ISO Classes 5-9)

FEATURES:

- Available in Stainless Steel construction
- Premium Driver with Dimming standard
- Type IC
- Every luminaire tested to assure customer satisfaction
- 5 year limited warranty

SPECIFICATIONS

HOUSING:

Constructed of nominal 20GA (.036) zinc coated steel for unmatched corrosion protection. Two welded, tapered, threaded flanges on the top provide a sealed wireway access. All seams are sealed with a long life acrylic sealant.

REFLECTOR:

Fabricated of aluminum, painted with a minimum reflectance of 88%.

LENS FRAME:

Exclusively designed, heavy duty, extruded, anodized aluminum with stainless steel captive screws used to hold the lens frame tight to the housing. The frame is hinged for support while servicing.

GASKETING:

An extruded, ribbed vinyl gasket seals the lens into the frame; with our exclusive, mechanically held, extruded, silicone gasket used to seal the frame to the housing.

FINISH:

Painted surfaces are two mil white polyester enamel, special colors available.

LENS:

.125 StarFrost Acrylic with 50% DR content for durability, smooth side out. See Ordering Information for other high quality lens options.

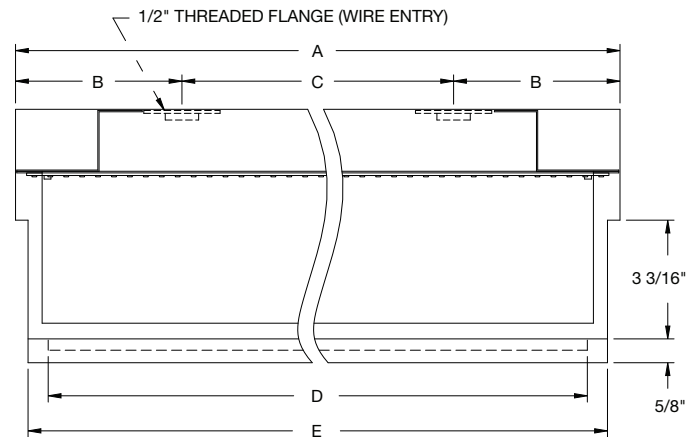
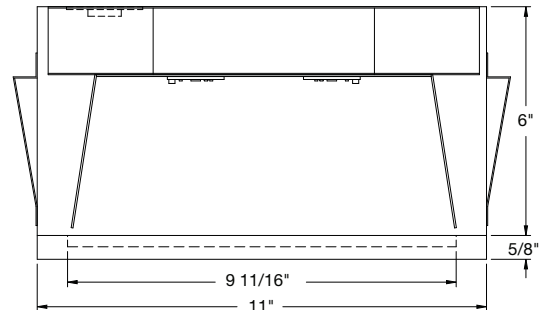
ELECTRICAL:

High efficiency LED/Driver combination delivers 160 Lumens/Watt raw array efficacy with 80+ CRI. 4000K color temperature is standard with options for 2700, 3000, 3500 and 5000K. 0-10V dimming comes standard with other control options available. THD <10%@120V, <15%@277V, PF> .95.

MOUNTING:

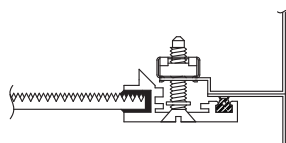
Gel grid or custom detail available.

GEL GRID DESIGN

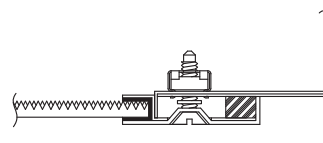


LENGTH (ft)	WEIGHT (lbs)	DIMENSIONS IN INCHES				
		A	B	C	D	E
2	19	23 29/32	5 3/8	13 1/4	21 3/4	23 9/32
4	22	47 29/32	5	38	45 3/4	47 9/32

LENS FRAME DETAILS



ALUMINUM
LENS FRAME DETAIL



STAINLESS STEEL
LENS FRAME DETAIL

JL-DM-102722



G0 Series

PRODUCT CODE CLEANROOM / WET LOCATIONS

SERIES	LENGTH	MOUNTING	VOLTAGE	CCT	CRI	LUMENS	FINISH	LENS	DIMMING	OPTIONS
PMGO		GS	UNV						LD	
PMGO Cleanroom / Wet		GS ⁷ Grid Special (Specify)	UNV 120-277V		CRI83 83 CRI CRI90 90 CRI		PZ Painted Zinc Steel Housing, Aluminum Lens Frame S2 Stainless Steel Housing, Aluminum Lens Frame S3 Stainless Steel Complete S5 Stainless Steel Lens Frame, Painted Zinc Steel Housing CC Custom Color		LD Dimming 0-10V	
	2 2 FT. 4 4 FT.			27K 2700K 3K 3000K 35K 3500K 4K 4000K 5K 5000K	2 FT 19L 1850 lm (14W) 37L 3700 lm (28W) 4 FT 37L 3700lm (28W) 74L 7400 lm (56W)		L3 .125 White Acrylic LH3 .150 Extra Heavy White Acrylic L4 .140 Prismatic Acrylic (P12) L5 .125 StarFrost Acrylic (base) L7 .125 White Polycarbonate L8 .156 Prismatic Polycarbonate (P12) L9 .187 Tempered Glass (P62) LH6 .187 Clear Tempered Glass LJ4 .020 White Acrylic Overlay (Array Side)		BBU 10W Battery Backup, Integral BBU1 12W Battery Backup, Integral BBUR2 ⁶ 20W Battery Backup, Remote F1 GLR/HLR Fusing (Fast) F2 GMF/HLR Fusing (Slow) P11 ² Guardcraft® Antimicrobial Coating T3 Tamper Resistant (Hex w/pin or other) V0 No Silicone Sealant Used V1 External Gasketing	

2 = Only Available with Painted Zinc Finish

6 = The 20W Battery Backup Remote powers a minimum of 3 arrays and must be mounted on the outside of the fixture or in a remote dry/damp location. Maximum mounting height to comply with Egress Path Illumination levels is 17 feet.

7 = Consult factory, must supply Grid Manufacturer and system model number information.

2 = Only Available with Painted Zinc Finish

6 = The 20W Battery Backup Remote powers a minimum of 3 arrays and must be mounted on the outside of the fixture or in a remote dry/damp location. Maximum mounting height to comply with Egress Path Illumination levels is 17 feet.

7 = Consult factory, must supply Grid Manufacturer and system model number information.

NOTE: Designed to work in conjunction with the Gordon Gel Grid Ceiling System (or similar systems).

SS NOTE: If Stainless Steel is ordered, 304 SS Standard, 316 SS and other materials available, consult agent. Additional information regarding applications and proper Stainless Steel selection found in technical section of web site.

LUMEN OUTPUT: All listed lumen values are nominal. Lens transmission and fixture efficiency affect overall lumens.

NOT SUITABLE FOR GYPSUM/PLASTER OR METAL PAN CEILINGS

NOT ALL COMBINATIONS POSSIBLE

JL-DM-102722