

C9 Series

Craft Lite®

Extreme Series | Surface Mount



Made in USA with domestic & globally sourced components

APPLICATIONS:

- ETL/cETL Listed Wet Location
- Industrial & Commercial
- Transit

FEATURES:

- Tested to LM79, LM80
- L70 is >54,000 hours
- Square version available
- Available in Stainless Steel construction
- Premium Driver with Dimming standard
- Every luminaire tested to assure customer satisfaction
- 5-Year limited warranty

SPECIFICATIONS

HOUSING:

Constructed of 20GA (0.036 inch) zinc coated steel for unmatched corrosion protection. Featuring a double channel, one welded inside the other, with space between the channel sides to capture the diffuser. Threaded hubs are continuously welded into the channel ends providing a sealed wireway access. Removable plugs seal the hubs when not utilized.

OPTIONAL PREMIUM MATERIALS:

S4 - All metal components of 304 stainless steel.

END CAPS:

Die formed of 18GA (0.048 inch) stainless steel. A threaded, knurled ring secures the end cap to the luminaire housing. End caps secure lens.

GASKETING:

EPDM is used in the housing channels and end caps.

FINISH:

Painted surfaces are two mil white polyester enamel, custom colors available.

LENS:

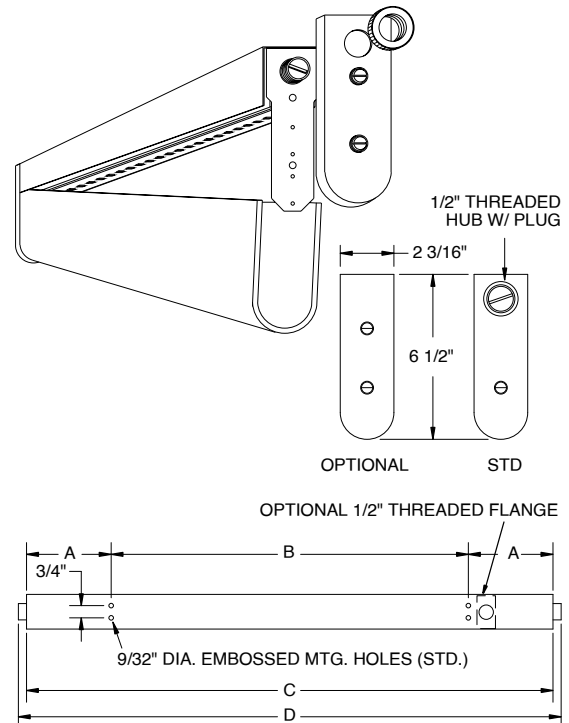
0.125 inch StarFrost® Acrylic with 50% DR content for durability, smooth side out. See ordering information for other high quality acrylic and polycarbonate lens options. A two piece lens with center joiner band is available.

ELECTRICAL:

High efficiency LED/Driver combination delivers 160 Lumens/Watt raw array efficacy with 80+ CRI. 4000K color temperature is standard with options for 2700K, 3000K, 3500K, and 5000K. 0-10V dimming comes standard with other control options available. THD <10% @ 120V, <15% @ 277V, PF > 0.95.

MOUNTING:

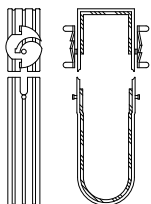
Surface, chain, or pendant options available for covered ceiling installations. Continuous row luminaires manufactured with aligning pins and utilize joiner bands. For further information, contact Sales Representative.



LENGTH (ft)	WEIGHT (lbs)	DIMENSIONS IN INCHES			
		A	B	C	D
1	4	2 3/32	10	14 3/16	15 5/16
2	8	4 19/32	16	25 3/16	26 5/16
3	11	10 1/8	16	36 1/4	37 3/8
4	13	7 5/8	32	47 1/4	48 3/8
5	14	13 1/8	32	58 1/4	59 3/8
6	16	10 5/8	48	69 1/4	70 3/8
7	17	8 5/32	64	80 5/16	81 7/16
8	18	13 21/32	64	91 5/16	92 7/16

FEATURES | OPTIONS

C9 JOINER BAND



JL-TD-91923

C9 Series — Wet Location

PRODUCT ORDERING CODE

SERIES	LENGTH	MOUNTING	VOLTAGE	CCT	CRI	LUMENS	FINISH	LENS	DIMMING	OPTIONS
PMC9			UNV						LD	
PMC9 Wet Location			UNV 120 - 277 VAC		CRI83 83 CRI CRI90 90 CRI				LD Dimming 0-10V	
	1 1 FT 2 2 FT 3 3 FT 4 4 FT 5 5 FT 6 6 FT 7 7 FT 8 8 FT	MS1 Marine Straps Zinc MS2 Marine Straps Stainless CM Cable* Mount PM Pendant** Mount SF Surface Mount Surface Mount with SC Bracket (for chain* mount or standoff)		27K 2700K 3K 3000K 35K 3500K 4K 4000K 5K 5000K			PZ White Painted Zinc Steel S4 Stainless Steel CC Custom Color S1 Special Material ⁴	L3 0.125 White Acrylic (Cell Cast) LH3 0.150 Extra Heavy White Acrylic L4 0.140 50% DR Ext. Prismatic Acrylic (P20) L5 0.125 StarFrost® Acrylic (base)		
		*Requires third-party hardware **Requires third-party mounting stem and hardware				1 FT 9L 899 lm (10W) 2 FT 18L 1797 lm (20W) 3 FT 27L 2696 lm (30W) 4 FT 36L 3594 lm (40W) 5 FT 45L 4493 lm (50W) 6 FT 54L 5391 lm (60W) 7 FT 63L 6290 lm (70W) 8 FT 72L 7188 lm (80W)			BBU 10W Battery Backup, Integral BBU1 12W Battery Backup, Integral BBUR2 20W Battery Backup, Remote ⁶ F1 GLR/HLR Fusing (Fast) F2 GMF/HLR Fusing (Slow) M3C In-Row Center ⁷ M3E In-Row End ⁷ J8 Wire Guard P11 Guardcraft® Antimicrobial Coating ³ T3 Tamper Resistant (Hex w/pin or other) T6 Screw-on End Caps (Requires W5) T7 Hub Cap (Replaces Ring & Plug) W5 Rear Wire Entry ⁴	
						Selection must match the chosen length				

Footnotes:

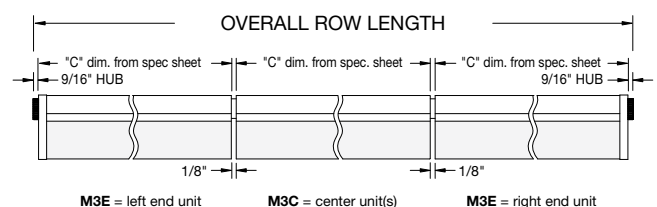
³ Only Available with White Painted Zinc Steel Finish

⁴ Consult Factory

⁶ The 20W Battery Backup Remote powers a minimum of 3 luminaires and must be mounted on the outside of the luminaire or in a remote dry/damp location

⁷ Refer to In-Row Construction drawing below to determine necessary center & end units. Every In-Row luminaire must include two ends (M3E), one or more centers (M3C) and joiner bands (drawing details pg. 1)

IN-ROW CONSTRUCTION



LUMEN OUTPUT: All listed lumen values are nominal. Lens transmission and fixture efficiency affect overall lumens.

INDIVIDUAL UNITS STANDARD

NOT ALL COMBINATIONS POSSIBLE

JL-TD-91923

Due to continuous development and improvements, specifications are subject to change without notice.