

C0 Series

Craft Lite®

Extreme Series | Surface Mount



APPLICATIONS:

- ETL/cETL Listed Wet Location
- NSF Certified Food Processing (Splash Zone, Food Zone)
- Industrial & Commercial
- Transit

FEATURES:

- Luminaires adaptable to your needs
- L70 is >60,000 hours
- Available in Stainless Steel construction
- Premium Driver with Dimming standard
- Every luminaire tested to assure customer satisfaction
- 3G Vibration Test rating
- 5-Year limited warranty

SPECIFICATIONS

HOUSING:

Constructed of 20GA (0.036 inch) zinc coated steel for unmatched corrosion protection. Featuring a double channel, one welded inside the other, with space between the channel sides to capture the diffuser. Threaded hubs are continuously welded into the channel ends providing a sealed wireway access. Removable plugs seal the hubs when not utilized.

Food Zone: All external metal components of stainless steel (S4 Finish Standard).

OPTIONAL PREMIUM MATERIALS:

S4 - All metal components of 304 stainless steel.

FINISH:

Painted surfaces are two mil of white polyester enamel, custom colors available.

LENS:

0.125 inch StarFrost® Acrylic with 50% DR content for durability, smooth side out. See ordering information for other high quality acrylic and polycarbonate lens options. A two piece lens with center joiner band is available.

END CAPS:

Die formed of 18GA (0.048 inch) stainless steel. A threaded, knurled ring secures the end cap to the luminaire housing. End caps secure lens.

GASKETING:

EPDM is used in the housing channels and neoprene end caps.

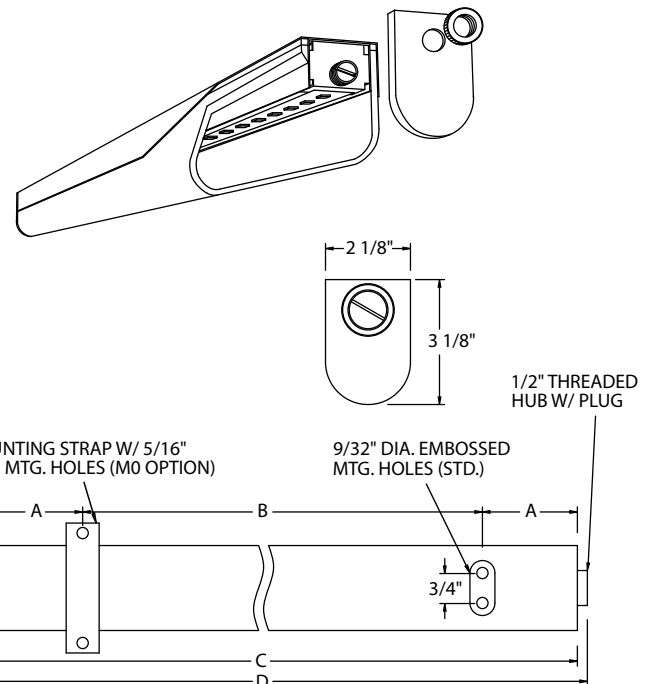
ELECTRICAL:

High efficiency LED/Driver combination delivers 160 Lumens/Watt raw array efficacy with 80+ CRI. 4000K color temperature is standard with options for 2700K, 3000K, 3500K, and 5000K. 0-10V dimming comes standard with other control options available. THD <10% @ 120V, <15% @ 277V, PF > 0.95.

MOUNTING:

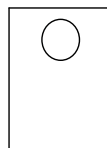
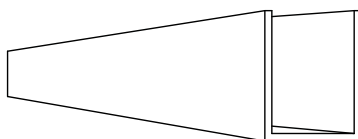
Surface, chain, or pendant options available for covered ceiling installations. Continuous row luminaires manufactured with aligning pins and utilize joiner bands. For further information, contact Sales Representative.

Splash and Food Zone: Surface or continuous row for covered ceiling installations only.



LENGTH (ft)	WEIGHT (lbs)	DIMENSIONS IN INCHES			
		A	B	C	D
2	8	3 19/32	18	25 3/16	26 5/16
3	10	2 3/16	32	36 1/4	37 3/8
4	12	7 5/8	32	47 1/4	48 3/8

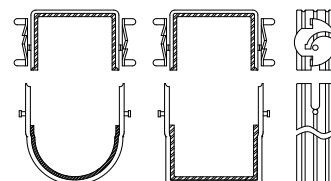
FEATURES | OPTIONS



SQUARE LENS MODELS AVAILABLE

L9W = White Square Polycarbonate
L9P = Prismatic Square Polycarbonate

C0 JOINER BANDS



AG-TD-082024

Due to continuous development and improvements, specifications are subject to change without notice.

C0 Series — Wet & NSF Splash Zone Locations

PRODUCT ORDERING CODE

SERIES	LENGTH	MOUNTING	VOLTAGE	CCT	CRI	LUMENS	FINISH	LENS	DIMMING	OPTIONS
			UNV						LD	
PMCO Wet Location			UNV 120 - 277 VAC		CRI83 83 CRI				LD Dimming 0-10V	
PMSCO NSF Splash Zone ¹					CRI90 90 CRI					
	2 2 FT			27K 2700K ⁴			PZ White Painted Zinc Steel			
	3 3 FT			3K 3000K			S4 Stainless Steel ³			
	4 4 FT			35K 3500K						
				4K 4000K						
				5K 5000K						
		MS1 Marine Straps Zinc						L3 0.125 White Acrylic (Cell Cast)		
		MS2 Marine Straps Stainless						L4 0.140 50% DR Ext. Prismatic Acrylic (P20)		
		CM Cable* Mount						L5 0.125 StarFrost® Acrylic (base)		
		PM Pendant** Mount						L7 0.125 White Polycarbonate		
		SF Surface Mount ³						L8 0.156 Prismatic Polycarbonate (P12)		
		Surface Mount with						L9W White Square Polycarbonate		
		SC Bracket (for chain* mount or standoff)						L9P Prismatic Square Polycarbonate		
		*Requires third-party hardware								
		**Requires third-party mounting stem and hardware								
	2 FT					19L 1900 lm (16W)				F1 GLR/HLR Fusing (Fast)
	3 FT					28L 2800 lm (21W)				F2 GMF/HLR Fusing (Slow)
	4 FT					38L 3800 lm (27W)				M3C In-Row Center ⁷
										M3E In-Row End ⁷
										J8 Wire Guard ⁸
										P11 Guardcraft® Antimicrobial Coating ⁹
										T3 Tamper Resistant (Hex w/pin or other) ³
										T6 Screw-on End Caps (Requires W5)
										T7 Hub Cap (Replaces Ring & Plug)
										W5 Rear Wire Entry ⁵

Footnotes:

¹ NSF Splash Zone luminaires (PMS prefix) may become soiled, but are outside the danger of recontamination

³ Required for 3G rating

⁴ Only 90 CRI

⁵ Consult Factory

⁷ Refer to In-Row Construction drawing below to determine necessary center & end units. Every In-Row luminaire must include two ends (M3E), one or more centers (M3C) and joiner bands (drawing details pg. 1)

⁸ Is not available for NSF Splash and Food Zones

⁹ Only Available with White Painted Zinc Steel Finish

C0 Series – NSF Food Zone Location

PRODUCT ORDERING CODE

SERIES	LENGTH	MOUNTING	VOLTAGE	CCT	CRI	LUMENS	FINISH	LENS	DIMMING	OPTIONS
PMFC0		SF	UNV				S4		LD	
PMFC0 NSF Food Zone ²			UNV 120 - 277 VAC		CRI83 83 CRI CRI90 90 CRI		S4 Stainless Steel ³		LD Dimming 0-10V	
	2 2 FT 3 3 FT 4 4 FT			27K 2700K ⁴ 3K 3000K 35K 3500K 4K 4000K 5K 5000K				L4 0.140 50% DR Ext. Prismatic Acrylic (P20) L5 0.125 StarFrost® Acrylic (base)		
		SF Surface Mount ³								
						2 FT 19L 1900 lm (16W) 3 FT 28L 2800 lm (21W) 4 FT 38L 3800 lm (27W)				F1 GLR/HLR Fusing (Fast) F2 GMF/HLR Fusing (Slow) T7 Hub Cap (Replaces Ring & Plug) W5 Rear Wire Entry ⁵
						Selection must match the selected length				

Footnotes:

² NSF Food Zone luminaires (PMF prefix) come in DIRECT CONTACT with food

³ Required for 3G rating

⁴ Only 90 CRI

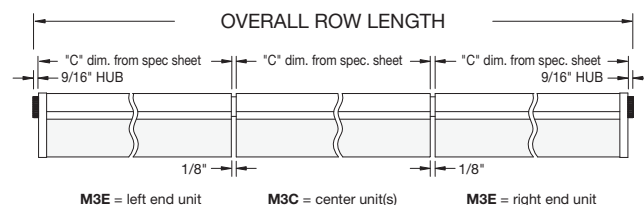
⁵ Consult Factory

LUMEN OUTPUT: All listed lumen values are nominal. Lens transmission and fixture efficiency affect overall lumens.

INDIVIDUAL UNITS STANDARD

NOT ALL COMBINATIONS POSSIBLE

IN-ROW CONSTRUCTION



AG-TD-082024

Due to continuous development and improvements, specifications are subject to change without notice.