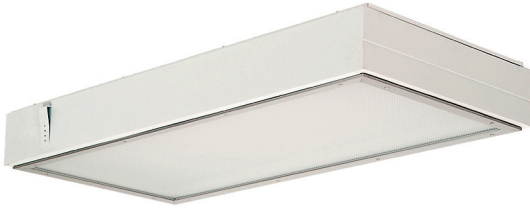


# G4 Series

# Grid Techniseal Troffer

## Grid Mount Rear Access



Food Processing:



### APPLICATIONS:

- Cleanroom (Classes 100-100,000; ISO Classes 5-9)
- Food Processing (NSF Certified Splash Zone, Food Zone)
- Industrial & Commercial
- Transit & Municipal
- Wet Location (ETL/cETL Listed)

### FEATURES:

- Rear Access
- L70 ≥ 60,000 hours
- Available in Stainless Steel construction
- Premium Driver with Dimming standard
- Type IC
- Every luminaire tested to assure customer satisfaction
- 5-Year limited warranty

## SPECIFICATIONS

### HOUSING:

Constructed of nominal 20GA (0.036) zinc coated steel for unmatched corrosion protection. Two welded, tapered, threaded flanges on the top provide a sealed wireway access. All seams are sealed with a long life acrylic sealant.

### FINISH:

Painted surfaces are two mil white polyester enamel, special colors available.

### LENS:

0.125 StarFrost Acrylic with 50% DR content for durability, smooth side out. See Ordering Information for other high quality lens options.

### LENS FRAME:

Exclusively designed, heavy duty, extruded, anodized aluminum with stainless steel captive screws used to hold the lens frame tight to the housing. The frame is hinged for support while servicing.

**Food Zone:** All external metal components of stainless steel (S3 option std).

### REFLECTOR:

Fabricated of aluminum, painted with a minimum reflectance of 88%.

### GASKETING:

An extruded, ribbed vinyl gasket seals the lens into the frame; with our exclusive, mechanically held, extruded, silicone gasket used to seal the frame to the housing.

**Food Zone:** Silicone sealant is used to seal the lens into the frame, with extruded EPDM sealing the frame to the housing.

### ELECTRICAL:

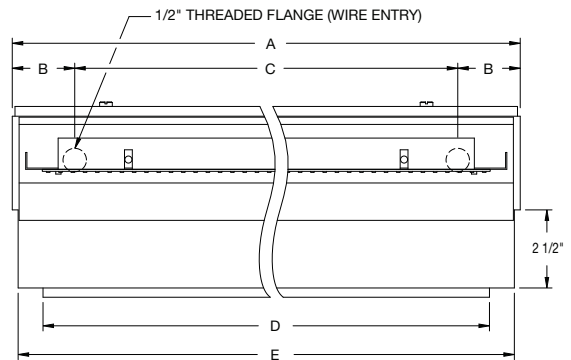
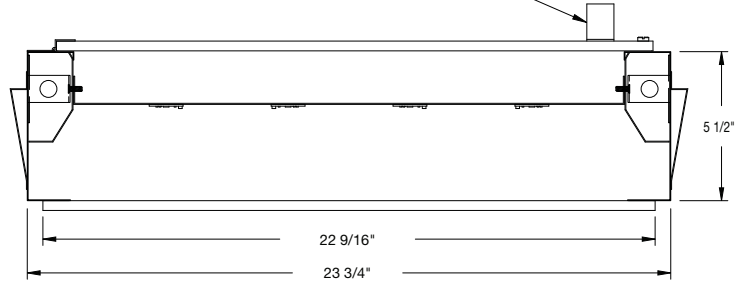
High efficiency LED/Driver combination delivers 160 Lumens/Watt raw array efficacy with 80+ CRI. 4000K color temperature is standard with options for 2700K, 3000K, 3500K, and 5000K. 0-10V dimming comes standard with other control options available. THD <10%@120V, <15%@277V, PF> 0.95.

### MOUNTING:

Grid or custom detail available.

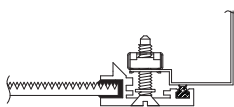
### REAR ACCESS DESIGN

HANDLE REQUIRES ASSEMBLY TO DOOR

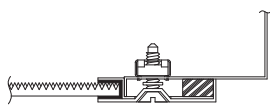


LENGTH (ft)	WEIGHT (lbs)	DIMENSIONS IN INCHES				
		A	B	C	D	E
2	23	23 29/32	1 31/32	20	22 9/16	23 17/32
4	38	47 29/32	1 31/32	44	46 1/2	47 17/32

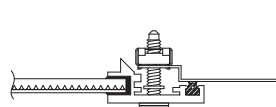
## LENS FRAME DETAILS



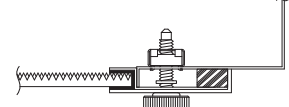
ALUMINUM  
LENS FRAME DETAIL



STAINLESS STEEL  
LENS FRAME DETAIL



SPLASH ZONE  
LENS FRAME DETAIL



FOOD ZONE  
LENS FRAME DETAIL

JC-TD-011926

Due to continuous development and improvements, specifications are subject to change without notice.

# G4 Series – Wet & NSF Splash Zone Locations

## PRODUCT ORDERING CODE

SERIES	LENGTH	MOUNTING	VOLTAGE	CCT	CRI	LUMENS	FINISH	LENS	DIMMING	OPTIONS
<b>PMG4</b> Wet Location <b>PMSG4</b> NSF Splash Zone <sup>1</sup>	<b>2</b> 2 FT <b>4</b> 4 FT	<b>G0</b> 1" (15/16") Standard <b>G1</b> 1 1/2" T-Bar <b>G2</b> 2" T-Bar	<b>UNV</b> 120-277V	<b>27K</b> 2700K <sup>4</sup> <b>3K</b> 3000K <b>35K</b> 3500K <b>4K</b> 4000K <b>5K</b> 5000K	<b>CRI83</b> 83 CRI <b>CRI90</b> 90 CRI	<b>17L</b> 1700 lm (15W) <b>35L</b> 3500 lm (31W) <b>53L</b> 5300 lm (46W) <b>70L</b> 7000 lm (61W) <b>38L</b> 3800 lm (33W) <b>76L</b> 7600 lm (66W) <b>113L</b> 11300 lm (98W) <b>151L</b> 15100 lm (131W)	<b>PZ</b> Painted Zinc Steel Housing, Aluminum Lens Frame <b>S2</b> Stainless Steel Housing, Aluminum Lens Frame <b>S3</b> Stainless Steel Complete <b>S5</b> Stainless Steel Lens Frame, Painted Zinc Steel Housing	<b>L3</b> 0.125 White Acrylic (Cell Cast) <b>LH3</b> 0.150 Extra Heavy White Acrylic <b>L4</b> 0.140 50% DR Ext. Prismatic Acrylic (P20) <b>L5</b> 0.125 StarFrost® Acrylic (base) <b>L7</b> 0.125 White Polycarbonate <b>L8</b> 0.156 Prismatic Polycarbonate (P12) <b>L9</b> 0.187 Tempered Glass (P62) <sup>5</sup> <b>LJ4</b> 0.020 White Acrylic Overlay (Array Side)	<b>LD</b> Dimming 0-10V	<b>BBU</b> 10W Battery Backup, Integral <b>BBU1</b> 12W Battery Backup, Integral <b>BBUR2</b> 20W Battery Backup, Remote <sup>6</sup> <b>F1</b> GLR/HLR Fusing (Fast) <b>F2</b> GMF/HLR Fusing (Slow) <b>P11</b> Guardcraft® Antimicrobial Coating <sup>7</sup> <b>T3</b> Tamper Resistant (Hex w/pin or other) <b>V1</b> External Gasketing
						Selection must match the selected length				Lumens (Typical)



**Footnotes:**

- <sup>1</sup> NSF Splash Zone luminaires (PMS prefix) may become soiled, but are outside the danger of recontamination
- <sup>3</sup> Consult Factory
- <sup>4</sup> Only 90 CRI
- <sup>5</sup> Only Available with Stainless Steel Lens Frame
- <sup>6</sup> The 20W Battery Backup Remote powers a minimum of 3 luminaires and must be mounted on the outside of the luminaire or in a remote dry/damp location.
- <sup>7</sup> Only Available with White Painted Zinc Steel Finish

# G4 Series – NSF Food Zone Location

## PRODUCT ORDERING CODE

SERIES	LENGTH	MOUNTING	VOLTAGE	CCT	CRI	LUMENS	FINISH	LENS	DIMMING	OPTIONS
<b>PMFG4</b>			<b>UNV</b>				<b>S3</b>		<b>LD</b>	
<b>PMFG4</b> NSF Food Zone <sup>2</sup>			<b>UNV</b> 120-277V		<b>CRI83</b> 83 CRI <b>CRI90</b> 90 CRI		<b>S3</b> Stainless Steel Complete		<b>LD</b> Dimming 0-10V	
	<b>2</b> 2 FT <b>4</b> 4 FT			<b>27K</b> 2700K <sup>4</sup> <b>3K</b> 3000K <b>35K</b> 3500K <b>4K</b> 4000K <b>5K</b> 5000K						
		<b>G0</b> 1" (15/16") Standard <b>G1</b> 1 1/2" T-Bar <b>G2</b> 2" T-Bar						<b>L4</b> 0.140 50% DR Ext. Prismatic Acrylic (P20) <b>L5</b> 0.125 StarFrost® Acrylic (base) <b>L9</b> 0.187 Tempered Glass (P62) <sup>5</sup>		
						<b>17L</b> 1700 lm (15W) <b>35L</b> 3500 lm (31W) <b>53L</b> 5300 lm (46W) <b>70L</b> 7000 lm (61W) <b>38L</b> 3800 lm (33W) <b>76L</b> 7600 lm (66W) <b>113L</b> 11300 lm (98W) <b>151L</b> 15100 lm (131W)			<b>BBU</b> 10W Battery Backup, Integral <b>BBU1</b> 12W Battery Backup, Integral <b>BBUR2</b> 20W Battery Backup, Remote <sup>6</sup> <b>F1</b> GLR/HLR Fusing (Fast) <b>F2</b> GMF/HLR Fusing (Slow) <b>T3</b> Tamper Resistant (Hex w/pin or other) <b>V1</b> External Gasketing	
						Selection must match the selected length	Lumens (Typical)			



Footnotes:

- <sup>2</sup> NSF Food Zone luminaires (PMF prefix) come in DIRECT CONTACT with food
- <sup>3</sup> Consult Factory
- <sup>4</sup> Only 90 CRI
- <sup>5</sup> Only Available with Stainless Steel Lens Frame
- <sup>6</sup> The 20W Battery Backup Remote powers a minimum of 3 luminaires and must be mounted on the outside of the luminaire or in a remote dry/damp location.

**LUMEN OUTPUT:** All listed lumen values are nominal. Lens transmission and fixture efficiency affect overall lumens.

**INDIVIDUAL UNITS STANDARD**  
**NOT ALL COMBINATIONS POSSIBLE**