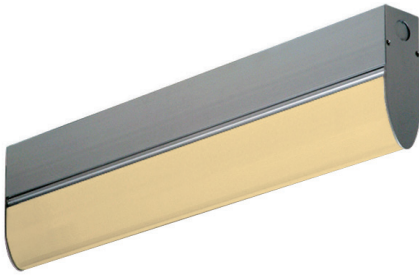


# A1A Series – Narrow Spectrum Amber

**AeroLux®**

**Surface Mount**



**APPLICATIONS:**

- Cleanroom (Classes 10-100,000; ISO Classes 4-9)
- Industrial & Commercial
- Pharmaceutical
- Biology
- Electronics
- Aerospace
- Medical

**FEATURES:**

- ETL/cETL Listed Dry Location
- Narrow spectrum 572 nm Amber LED
- L70 ≥ 100,000 hours
- Luminaires adaptable to your specific needs
- Premium Driver with Dimming standard
- UV Filtering Lens up to 370 nanometers
- Every luminaire tested to assure customer satisfaction
- 5-Year limited warranty

**SPECIFICATIONS**

**HOUSING:**

Constructed of heavy duty extruded, anodized aluminum. Wireway access can be provided in the top (W5 option).

**LENS:**

Extruded from a proprietary impact modified acrylic blend, specially formulated to minimize hot spots and provide maximum light transmission. This lens features a smooth exterior and utilizes light controlling longitudinal prisms that direct light output into the room with reduced glare. This high performing lens is the ideal solution for modern LED technology.

**END CAPS:**

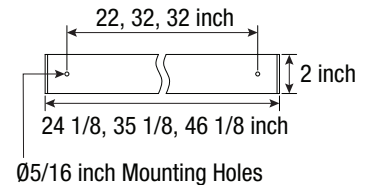
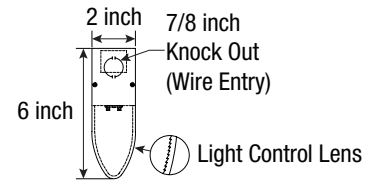
Laser cut steel with powder coat finish. Knock outs are provided in each end cap as standard for wireway access, or top of housing (W5 option).

**ELECTRICAL:**

High efficiency LED/Driver combination delivers amber light output suitable for lithography and other applications. 0-10V dimming comes standard with other control options available. THD <10% @ 120V, <15% @ 277V, PF> 0.95.

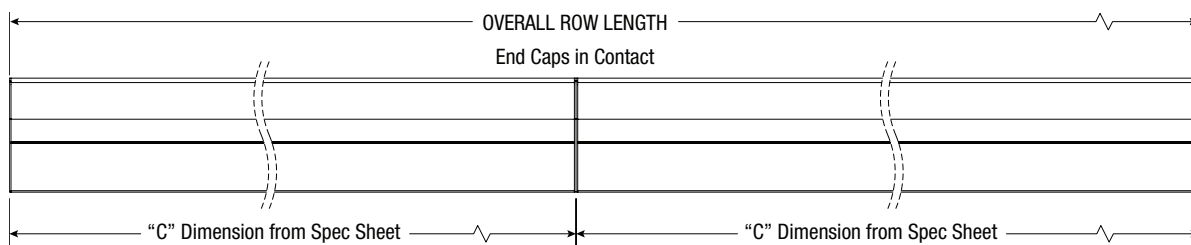
**MOUNTING:**

Designed for HEPA filter grid ceiling; surface, surface in-row, cable, or pendant options available.



LENGTH		WEIGHT	
(ft)		(lbs)	
2		8	
4		11	

**FEATURES | OPTIONS**

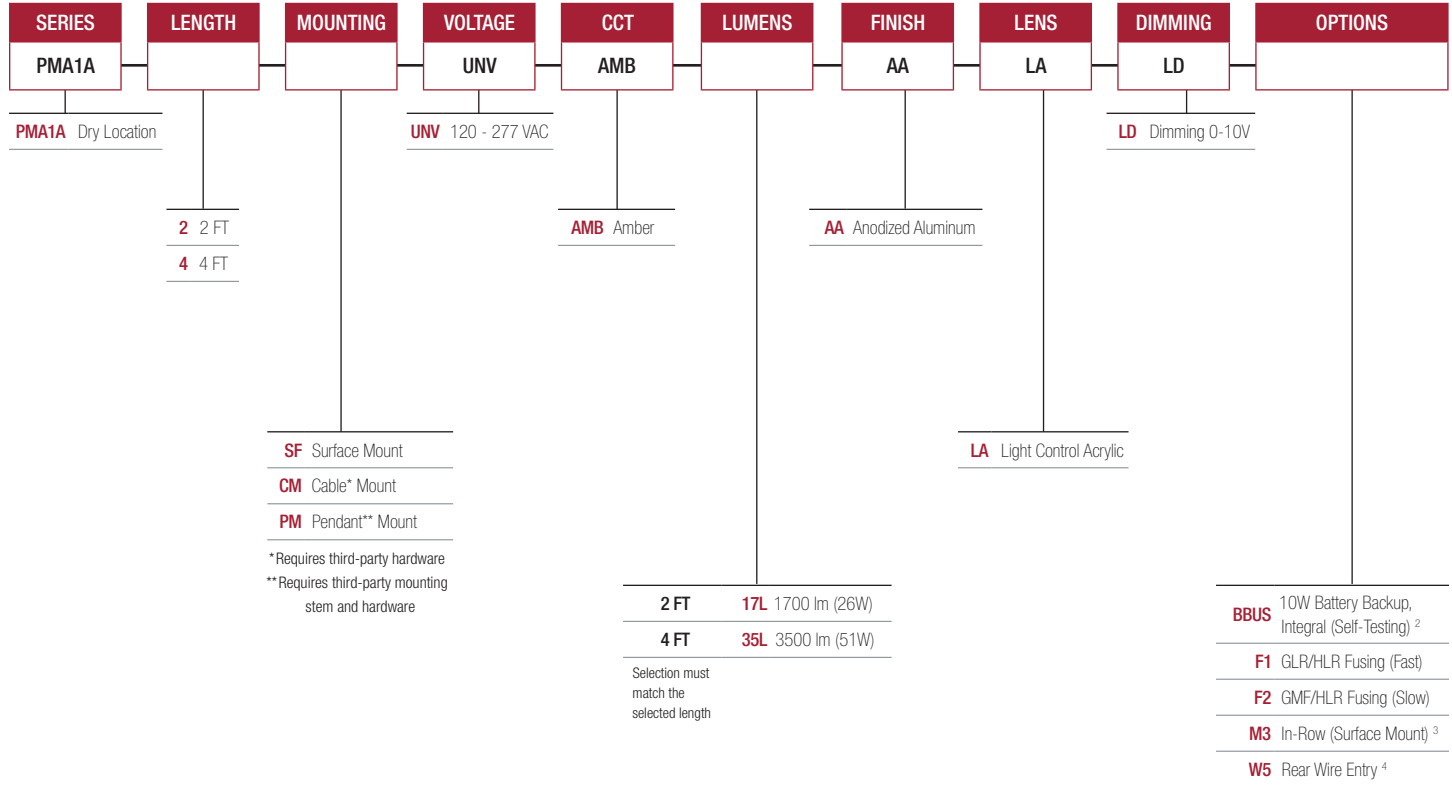


AG-DM-040726

Due to continuous development and improvements, specifications are subject to change without notice.

# A1A Series – Dry Location

## PRODUCT ORDERING CODE



Footnotes:

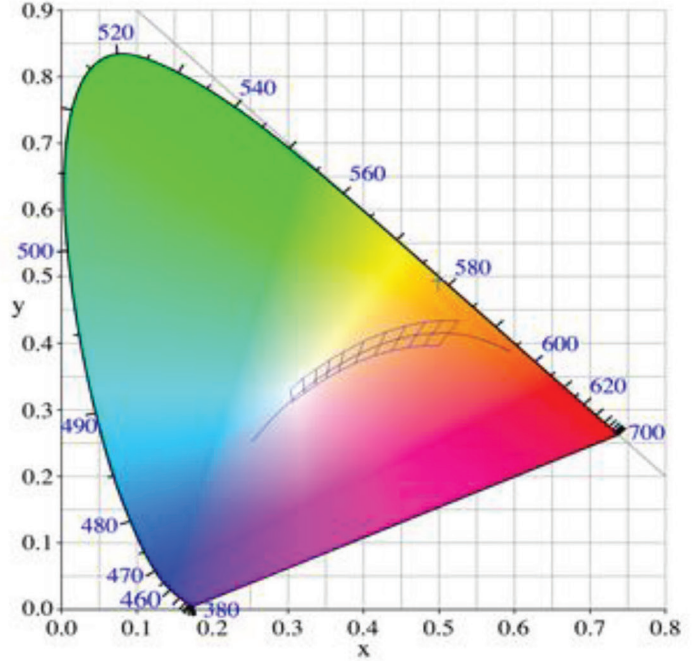
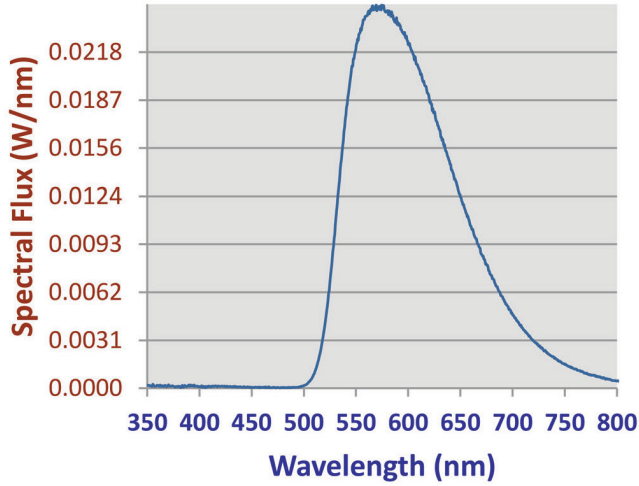
- <sup>2</sup> Only available on 2 & 4 FT lengths; not compatible with W5 (RWE)
- <sup>3</sup> Refer to In-Row Construction drawing (details pg. 1)
- <sup>4</sup> Consult Factory

CONTACT FACTORY FOR DIFFERENT WAVELENGTHS.

# A1A Series

**PHOTOMETRICS**

## Relative Spectral Power Distribution



NARROW SPECTRUM AMBER	
Peak Wavelength	Dominant Wavelength
572.1	578