

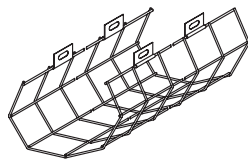
Starduster® & Craft Lite® Luminaire Options

For C-Series Product Line

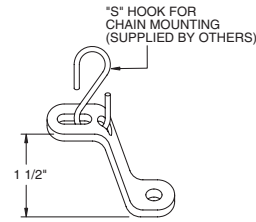
REFLECTOR TAPE
SUFFIX- K8
(SPECIFY LOCATION)



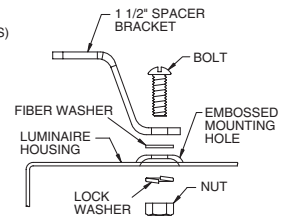
WIRE GUARD
OPTION SUFFIX- J8



MOUNTING BRACKET KIT
OPTION SUFFIX- M2

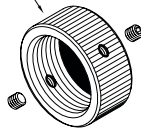


SUSPENDED MOUNTING



SURFACE MOUNTING

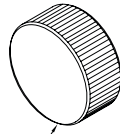
TAMPER RESISTANT
HUBCAP (T7-T3)



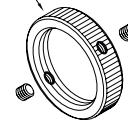
OPTIONAL HUBCAP (T7)



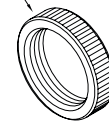
HUBCAP FRONT VIEW



TAMPER RESISTANT
RING NUT (T3)



STANDARD RING NUT

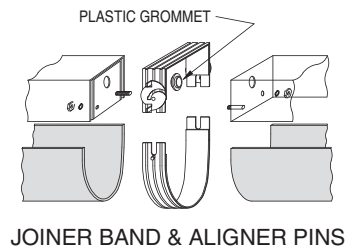
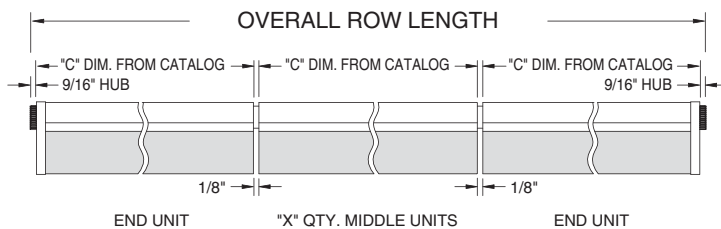


In-Row Option -M3

Craft Lite and Starduster C-Series luminaires ship as Individual Units as standard policy!

Luminaires may be mounted continuously in rows by selecting the **M3** mounting option. The construction is different than standard individual units and fixtures built with the **M3** option can **NOT** be **modified** or **returned**. In-row mounting information is important for correct ordering. In-row luminaires are manufactured as either middle or end units. The two are **NOT** interchangeable. They have aligner pins which cannot be modified or re-configured in the field without voiding our warranty.

IN-ROW CONSTRUCTION, OPTION -M3



Supplying this information when ordering is critical to avoid delivery delays or errors. The key question is "are these being mounted **continuously in-rows** or as **individual units**?" If it is **in-row**, we need a specific count on **middle units** and on **end units**. Please note that there is **NO ADDITIONAL COST** for the M3 option, but the information is still critical for accurate ordering. This applies to all Craft Lite and Starduster C-series products.

INDIVIDUAL UNITS PLACED IN A ROW (NO -M3)

