

PMVRSW9 Stairwell Light - INSTALLATION INSTRUCTIONS

CAUTION: BEFORE CONNECTING THE FIXTURE TO A POWER SUPPLY, MAKE SURE THE POWER IS SWITCHED OFF.

GENERAL:

1. Before starting the installation, make sure all electricity has been turned off and electrical breaker has been locked out and tagged out.
2. To ensure the success of the installation, be sure to read these instructions and review the diagrams thoroughly before beginning.
3. All electrical connections must be in accordance with local codes, ordinances, or the National Electrical Code.
4. These fixtures are intended to be mounted to a J-Box directly supported by the building structure.
5. All luminaires to be installed by a qualified electrician.

NOTE: The important safeguards and instructions appearing in this manual are not meant to cover all possible conditions and situations that may occur.

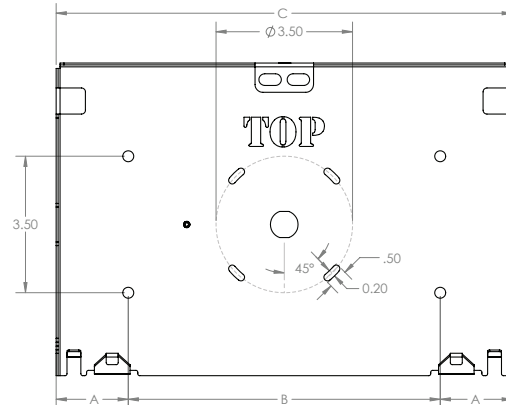
INSTALLATION

1. Attach baseplate to J-Box (Checking for level position). Orient "TOP" upwards.
2. Attach wires from power source into fixture.
IMPORTANT: Make sure all connections follow code requirements.
3. Locate the hooks on the bottom of the baseplate. Place them into the slots on the backside of the top cover.
4. Attach the safety carabiner from the top-cover to the baseplate. See Illustration 4 below.
5. Connect wires from power source to top-cover.
6. Gently rotate the top cover into position with the baseplate, so that the two holes at the top align.
7. Fasten the Locking Screw into place

IMPORTANT: All FC/SSL products can be cleaned with non-abrasive and chemical free agents. Use a soft cloth with mild detergent on exterior only.

1 BASE PLATE (INSIDE VIEW)

LENGTH (ft)	WEIGHT (lbs)	DIMENSIONS IN INCHES		
		A	B	C
1	6.6	2.1	8	12
2	9.8	3.9	16	23.75
3	13	9.8	16	35.5
4	16.3	7.7	32	47.4



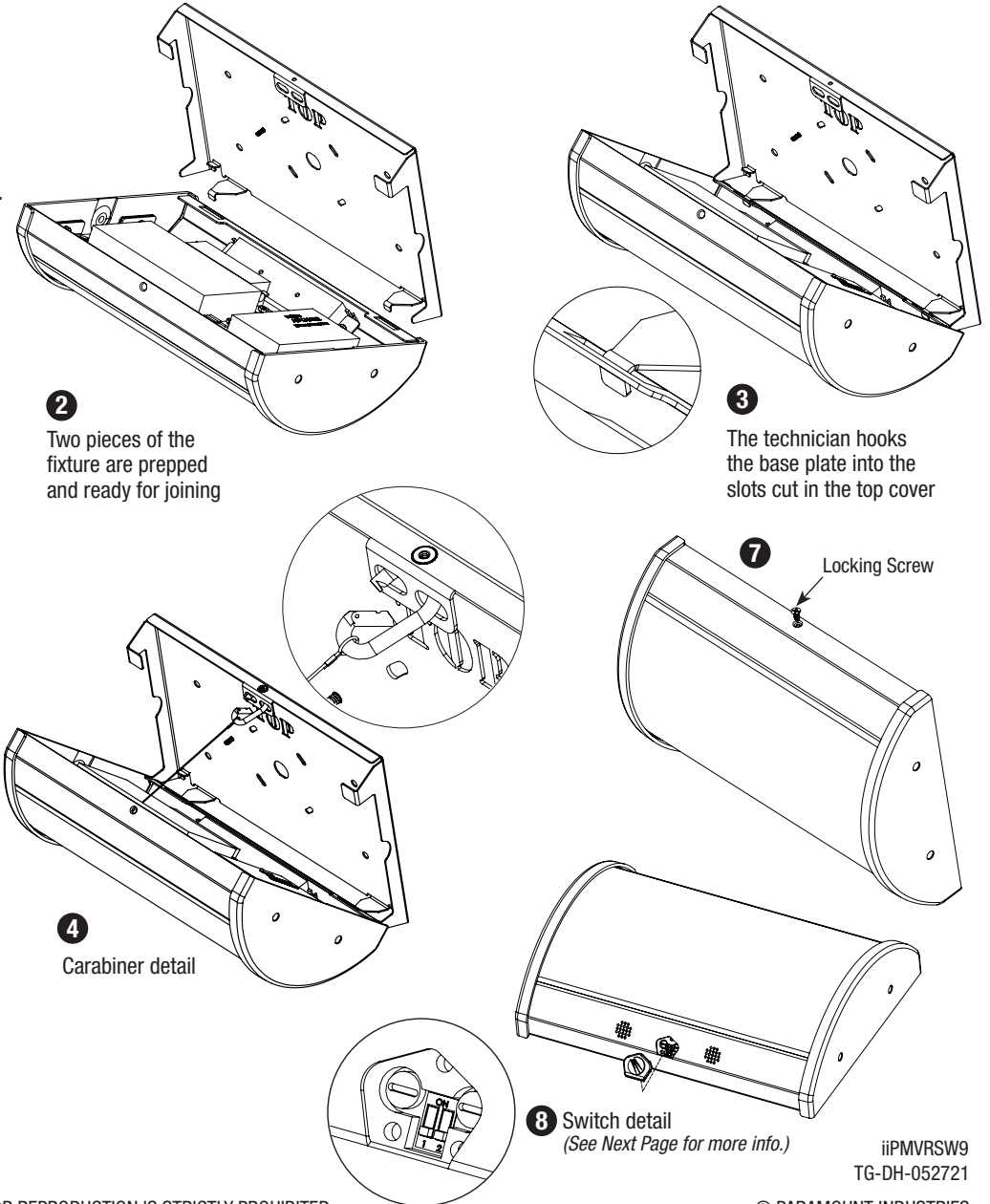
CONFIDENTIAL

THIS DOCUMENT IS THE PROPRIETARY PROPERTY OF PARAMOUNT INDUSTRIES. ANY UNAUTHORIZED TRANSFER, USE OR REPRODUCTION IS STRICTLY PROHIBITED.



corporate
t 800.521.5405
f 800.852.7154
3625 Swenson Ave.
St. Charles, IL 60174

DETAILED ILLUSTRATIONS



iiPMVRSW9
TG-DH-052721

© PARAMOUNT INDUSTRIES

PMVRSW9 Stairwell Light (Switch Detail) - INSTALLATION INSTRUCTIONS

CAUTION: BEFORE CONNECTING THE FIXTURE TO A POWER SUPPLY, MAKE SURE THE POWER IS SWITCHED OFF.



corporate
t 800.521.5405
f 800.852.7154
3625 Swenson Ave.
St. Charles, IL 60174

SENSOR OPERATION

Users can manually program length of time delays, sensor range and dimming level using a series of dipswitches and trimpots.

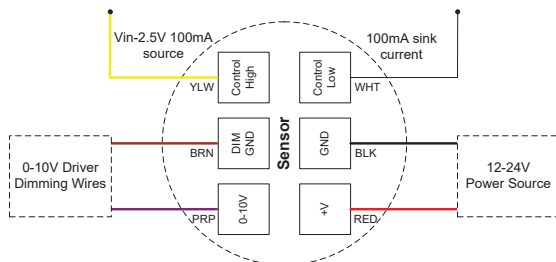
Bi-level Dimming: 0-10V dimmer connects to 0-10V control on the LED driver. When motion is detected the sensor will bring lighting up to 100% lumen output. When no motion is detected for the length of selected Time Delay, the sensor will send a signal to dim lighting to a specific level set by the end-user.

Test Mode: Test Mode sets the time delay to five seconds and runs for 5 minutes. LED flashed 2 times to indicate Test Mode started. After 5 minutes (or push the Test Mode button again), LED flashed 3 times, the sensor returns to the selected time delay. During test mode, full output when triggered, and dimming level reflects the dip switch setting.

Relay Control: Two additional High and Low motion outputs can be used to control relays or other control circuitry.

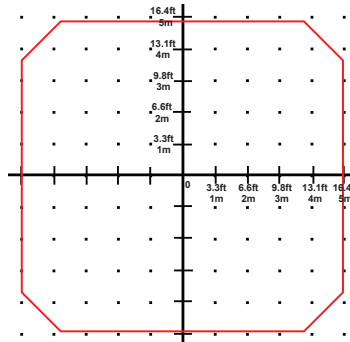
For Bluetooth notes, see next page.

Wiring Diagram

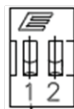
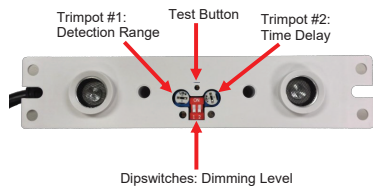


Note: If using a power pack other than PSC-AC-PP-200, connect either Control Hi or Control Low, depending on power pack relay circuitry.

Detection Area for 7.9ft (2.4m) Ceiling Mounted



Settings Adjustment



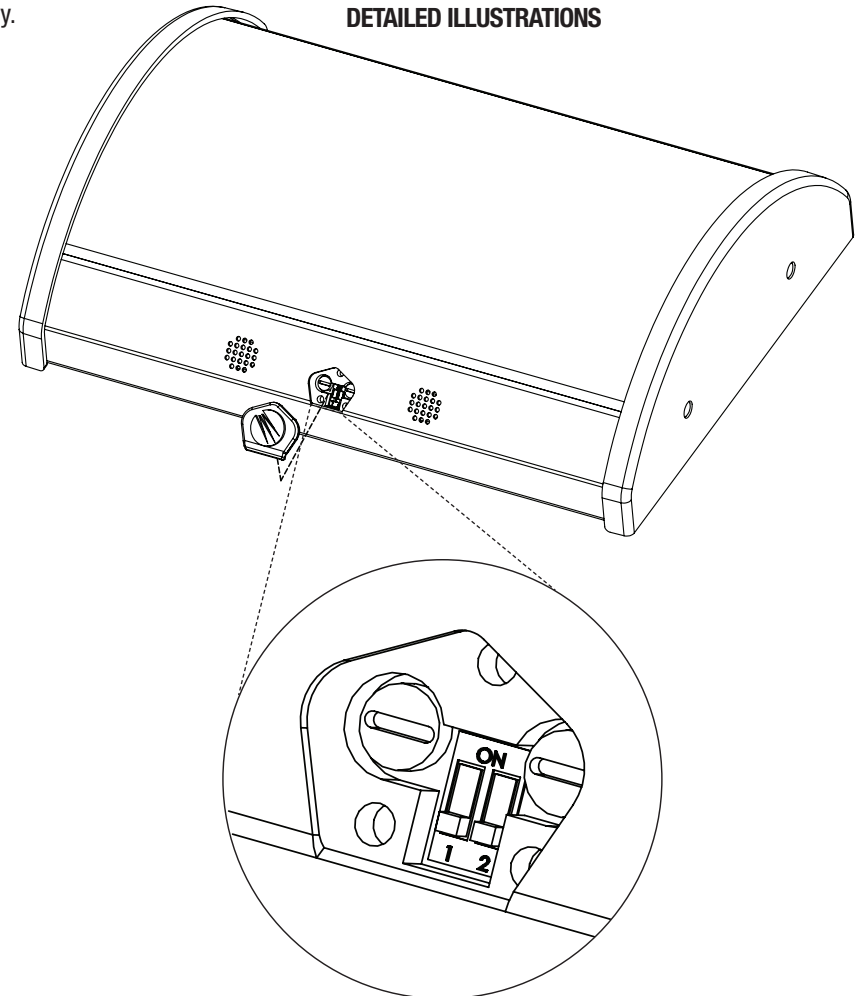
Dipswitch 1	Dipswitch 2	DIM Level
OFF	OFF	OFF
OFF	ON	10%
ON	OFF	25%
ON	ON	50%

Trimpots

Trimpot #1 on left adjusts motion detection range and sensitivity. Trimpot #2 on right adjusts time delay. Turn clockwise to increase, turn counter-clockwise to decrease.

Test Button sets the time delay to five seconds and runs for 5 minutes. LED flashed 2 times to indicate Test Mode started. After 5 minutes (or push the Test Mode button again), LED flashed 3 times, the sensor returns to the selected Trimpot time delay setting.

DETAILED ILLUSTRATIONS



CONFIDENTIAL

THIS DOCUMENT IS THE PROPRIETARY PROPERTY OF PARAMOUNT INDUSTRIES. ANY UNAUTHORIZED TRANSFER, USE OR REPRODUCTION IS STRICTLY PROHIBITED.

TG-DH-052721

© PARAMOUNT INDUSTRIES

PMVRSW9 Stairwell Light (Switch Detail) - INSTALLATION INSTRUCTIONS

CAUTION: BEFORE CONNECTING THE FIXTURE TO A POWER SUPPLY, MAKE SURE THE POWER IS SWITCHED OFF.



corporate
t 800.521.5405
f 800.852.7154
3625 Swenson Ave.
St. Charles, IL 60174

BLUETOOTH

Optional Bluetooth Smart and Bluetooth Mesh: The Bluetooth Low Energy (BLE) enabled version pairs with an Android or iOS application to allow initial setup and subsequent sensor adjustments, beyond what the analog controls on the sensor can offer. The mobile application enables adjustment of sensor parameters such as time delay, dim level, sensitivity, daylight detection, and more.



PacWave Sensor

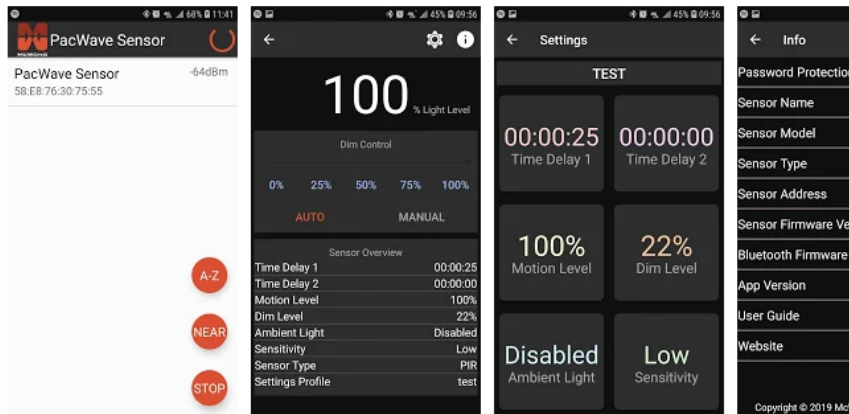
McWong International Inc. Tools

Everyone

This app is available for your device

Add to wishlist

Install



The PacWave™ Sensor mobile application complements your Bluetooth® Smart enabled PacWave™ Ultrasonic, Microwave, and PIR bi-level occupancy sensors by providing a simple user interface to configure the sensor's settings beyond what the physical controls can offer, view real-time feedback from the sensor, and control your lighting.

Bluetooth® option pairs with Android or iOS mobile application (PacWave Sensor).

CONFIDENTIAL

THIS DOCUMENT IS THE PROPRIETARY PROPERTY OF PARAMOUNT INDUSTRIES. ANY UNAUTHORIZED TRANSFER, USE OR REPRODUCTION IS STRICTLY PROHIBITED.

TG-DH-052721

© PARAMOUNT INDUSTRIES