

C2 Series

Extreme Series | Surface Mount



APPLICATIONS:

- ETL/cETL Listed Wet Location
- ETL/cETL Hazardous Location (Class I, Division 2; Groups A,B,C & D Class II, Division 2; Groups F & G)
- NSF Certified Food Processing (Splash Zone, Food Zone)
- Industrial & Commercial
- Transit

FEATURES:

- High Light Output: each array 1200 lumens
- Tested to LM79, LM80
- L70 is >54,000 hours
- Square version available
- Available in Stainless Steel construction
- Premium Driver with Dimming standard
- IK10 Impact resistance rating
- Every luminaire tested to assure customer satisfaction
- 5 year limited warranty

SPECIFICATIONS

HOUSING:

Constructed of 20GA (.036) zinc coated steel for unmatched corrosion protection. Featuring a double channel, one welded inside the other, with space between the channel sides to capture the diffuser. Threaded hubs are continuously welded into the channel ends providing a sealed wireway access. Removable plugs seal the hubs when not utilized.

Food Zone: All external metal components of stainless steel (S3 option std), maximum 4 foot length.

OPTIONAL PREMIUM MATERIALS:

- S3 - External metal components of 304 stainless steel.
- S4 - All metal components of 304 stainless steel.

END CAPS:

Die formed of 18GA (.048) stainless steel. A threaded, knurled ring secures the end cap to the luminaire housing. End caps secure lens.

GASKETING:

EPDM is used in the housing channels and end caps.

FINISH:

Painted surfaces are two mil of white polyester enamel, special colors available.

LENS:

One piece nominal .125 white translucent cell cast virgin acrylic. A two piece lens with center joiner band is available (H1 option).

ELECTRICAL:

High efficiency LED/Driver combination. 28 LED's per 11" board, 24 Volt constant voltage driver, 100 mA drive current, 4000K color temperature is standard with options for 2700, 3000, 3500 and 5000K, FR-4 board material, conformal coating for added moisture protection, 90°C temp. rating for entire system. Temperature monitored and current cut back to protect LED's against unusual environmental conditions. 0-10V dimming comes standard with other control options available.

MOUNTING:

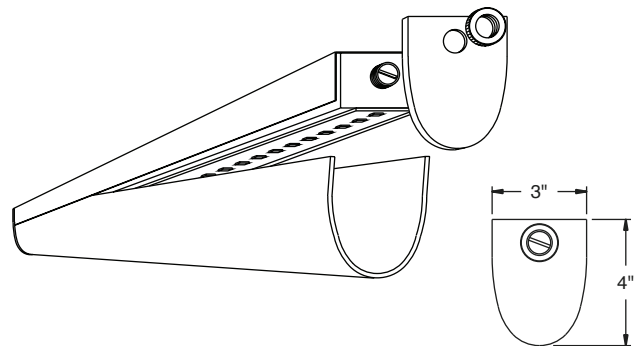
Surface, chain, or pendant options available for covered ceiling installations. Continuous row luminaires manufactured with aligning pins and utilize joiner bands. For further information, contact Sales Representative.

Splash and Food Zone: Surface for covered ceiling installations only.

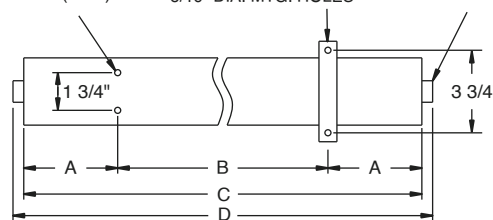
TEMPERATURE CODE:

Class I, Div. 2 = T4A (120°C); Class II, Div. 2 = T6 (85°C)

(No fixture surface exposed to the hazardous atmosphere will exceed this temperature. Based on 40°C (104°F) ambient.)



9/32" DIA. EMBOSSED MTG. HOLES (STD) OPTIONAL MTG STRAP W/ 5/16" DIA. MTG. HOLES 1/2" THREADED HUB W/ PLUG

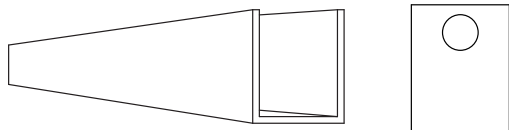


1/2" THREADED FLANGE (OPTIONAL, WET LOC.)

LENGTH (ft)	WEIGHT (lbs)	DIMENSIONS IN INCHES			
		A	B	C	D
1	4	2 3/32	10	14 3/16	15 5/16
2	8	4 19/32	16	25 3/16	26 5/16
3	10	10 1/8	16	36 1/4	37 3/8
4	13	7 5/8	32	47 1/4	48 3/8
5	16	13 1/8	32	58 1/4	59 3/8
6	20	10 5/8	48	69 1/4	70 3/8
7	23	8 5/32	64	80 5/16	81 7/16
8	26	13 21/32	64	91 5/16	92 7/16

FEATURES | OPTIONS

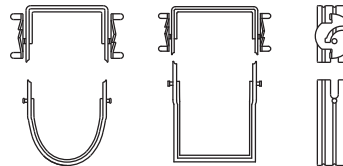
SQUARE POLYCARBONATE LENS AND END CAP



SQUARE LENS MODELS AVAILABLE

- L9W = White Square Polycarbonate
- L9P = Prismatic Square Polycarbonate

C2 JOINER BANDS



DB-DH-3221

C2 Series

PRODUCT CODE

SERIES	LENGTH	MOUNTING	VOLTAGE	CCT	CRI	LUMENS	FINISH	LENS	DIMMING	OPTIONS
PMFC2 Wet Location PMHC2 Hazardous PMSC2 Splash Zone (NSF)			UNV UNV 120-277V		CRI83 83 CRI CRI90 90 CRI		PZ Painted Zinc Steel S3 Stainless Steel Exterior S4 Stainless Steel Complete CC Custom Color S1³ Special Material		LD Dimming 0-10V	
		MS1 Marine Straps Zinc MS2 Marine Straps Stainless CM Cable Mount (by other) PM Pendant (by other) SC Surface/Chain Bracket* SF Surface Mount <i>* Required with Hazardous</i>		27K 2700K 3K 3000K 35K 3500K 4K 4000K 5K 5000K		1 FT 12L 1173 lm 2 FT 23L 2346 lm 3 FT 35L 3519 lm 4 FT 47L 4692 lm 5 FT 59L 5865 lm 6 FT 70L 7038 lm 7 FT 82L 8211 lm 8 FT 93L 9384 lm		L3 .125 White Acrylic (Cell Cast) LH3 .150 Extra Heavy White Acrylic L4⁵ .140 50% DR Ext. Prismatic Acrylic (P20) L5⁵ .118 StarFrost Acrylic (base) L7⁵ .125 White Polycarbonate L8⁵ .156 Prismatic Polycarbonate (P12) L9W White Square Polycarbonate L9P Prismatic Square Polycarbonate	LD Dimming 0-10V	BBUR 10W Battery Backup BBUR1 12W Battery Backup BBUR2⁶ 20W Battery Backup Remote * F1 GLR/HLR Fusing (Fast) F2 GMF/HLR Fusing (Slow) M3C⁹ In-Row Center M3E⁹ In-Row End J8⁴ Wire Guard P11 Guardcraft® Antimicrobial Coating T3 Tamper Resistant (Hex w/pin or other) T6 Screw-on End Caps (Requires W5) T7 Hub Cap (Replaces Ring & Plug) W5³ Rear Wire Entry

3 = Consult Factory
 4 = N/A Splash/Food Zones
 5 = Lengths greater than 4' require two lenses with a Joiner Band
 6 = The 20W Battery Backup Remote powers a minimum of 3 arrays and must be mounted on the outside of the fixture or in a remote dry/damp location. Maximum mounting height to comply with Egress Path Illumination levels is 17 feet.
 9 = Refer to In-Row Construction drawing below to determine necessary center & end units. Every In-Row array must include two ends (M3E), one or more centers (M3C) and joiner bands (drawing details pg. 1).

* Battery Backup NOT Available for Hazardous Location

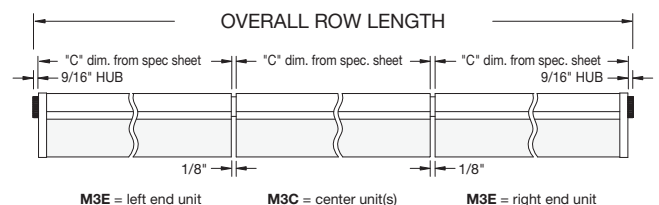
SERIES	LENGTH	MOUNTING	VOLTAGE	CCT	CRI	LUMENS	FINISH	LENS	DIMMING	OPTIONS
PMFC2 Food Zone (NSF)		SF	UNV UNV 120-277V		CRI83 83 CRI CRI90 90 CRI		S3 Stainless Steel Exterior (std) S4 Stainless Steel Complete		LD Dimming 0-10V	
		SF Surface Mount		27K 2700K 3K 3000K 35K 3500K 4K 4000K 5K 5000K		1 FT 12L 1173 lm 2 FT 23L 2346 lm 3 FT 35L 3519 lm 4 FT 47L 4692 lm 5 FT 59L 5865 lm 6 FT 70L 7038 lm 7 FT 82L 8211 lm 8 FT 93L 9384 lm	L4 .140 50% DR Extruded Prismatic Acrylic (P20) L5 .118 StarFrost Acrylic (base) Note: Maximum 4 Foot Length	LD Dimming 0-10V	BBUR 10W Battery Backup BBUR1 12W Battery Backup BBUR2⁶ 20W Battery Backup Remote F1 GLR/HLR Fusing (Fast) F2 GMF/HLR Fusing (Slow) P11 Guardcraft® Antimicrobial Coating T7 Hub Cap (Replaces Ring & Plug) W5³ Rear Wire Entry	

3 = Consult Factory
 6 = The 20W Battery Backup Remote powers a minimum of 3 arrays and must be mounted on the outside of the fixture or in a remote dry/damp location. Maximum mounting height to comply with Egress Path Illumination levels is 17 feet.

NSF Food Processing Note: Food Zone (PMF prefix) luminaires come in DIRECT CONTACT with food. Splash Zone (PMS prefix) units may become soiled, but are outside the danger of recontamination.

SS NOTE: If Stainless Steel is ordered, 304 SS Standard, 316 SS and other materials available, consult agent. Additional information regarding applications and proper Stainless Steel selection found in technical section of web site.

IN-ROW CONSTRUCTION



LUMEN OUTPUT: All listed lumen values are nominal. Lens transmission and fixture efficiency affect overall lumens.

INDIVIDUAL UNITS STANDARD

NOT ALL COMBINATIONS POSSIBLE

DB-DH-3221

Due to continuous development and improvements, specifications are subject to change without notice. Paramount reserves the right to change lab test details or specifications without notice. Product use certifies agreement to Paramount terms and conditions.